




Cite this: *Mater. Adv.*, 2023,  
4, 184

Received 7th October 2022,  
Accepted 11th November 2022

DOI: 10.1039/d2ma00958g

[rsc.li/materials-advances](https://rsc.li/materials-advances)

## Experimental absence of the non-perovskite ground state phases of $\text{MaPbI}_3$ explained by a Funnel Hopping Monte Carlo study based on a neural network potential†

Jonas A. Finkler \* and Stefan Goedecker

Methylammonium lead iodide is a material known for its exceptional opto-electronic properties that make it a promising candidate for many high performance applications, such as light emitting diodes or solar cells. A recent computational structure search revealed two previously unknown non-perovskite polymorphs, that are lower in energy than the experimentally observed perovskite phases. To investigate the elusiveness of the non-perovskite phases in experimental studies, we extended our Funnel Hopping Monte Carlo (FHMC) method to periodic systems and performed extensive MC simulations driven by a machine learned potential. FHMC simulations that also include these newly discovered non-perovskite phases show that above temperatures of 200 K the perovskite phases are thermodynamically preferred. A comparison with the quasi-harmonic approximation highlights the importance of anharmonic effects captured by FHMC.

### 1 Introduction

In recent years, perovskites have gathered a lot of attention due to their exceptional opto-electronic properties, which make them suitable for high performance devices, such as solar cells, lasers, photodetectors or light emitting diodes.<sup>1,2</sup> The general structure of perovskites, given by the formula  $\text{ABX}_3$ , consists of corner sharing  $\text{BX}_6$  octahedra arranged in a cubic lattice, that form cuboctahedral cavities, in which the A species are found. Due to many possible choices for the A B and X components, perovskites form a large design space that can be explored to optimize material properties.<sup>3,4</sup>

Many perovskite materials undergo so-called tilting phase transitions, that are characterized by a cooperative tilting of the corner sharing octahedra that leaves the internal connectivity of the B and X atoms intact.<sup>5,6</sup> Some materials, such as  $\text{FaPbI}_3$  and  $\text{CsPbI}_3$  can even undergo transitions to unwanted non-perovskite phases and there is ongoing research on stabilizing the perovskite phases.<sup>7,8</sup>

Due to the different properties of the phases, understanding and predicting the phase transition behaviour in perovskite materials is of great interest.

The presumably most widely used tools to study free energetic orderings in materials are the harmonic<sup>9</sup> (HA) and quasi-

harmonic<sup>10,11</sup> (QHA) approximations. Unfortunately, the applicability of these methods to perovskites is limited since the tilting motion of the octahedral structure was found to be highly anharmonic.<sup>12–14</sup>

Many perovskites, such as  $\text{CsSnI}_3$ ,<sup>13</sup>  $\text{MaPbI}_3$ ,<sup>15</sup> or  $\text{CsSnX}_3$  and  $\text{CsPbX}_3$ <sup>16</sup> can also be found in a high symmetry cubic phase, that is only stable at high temperatures. The geometries associated with these cubic phases can be constructed for small unit cells but an analysis of their imaginary frequency phonon modes reveals, that they are dynamically unstable under collective rotations of the octahedral cages.<sup>12,17–19</sup> The existence of these phases can therefore only be explained by entropic contributions to the free energy at higher temperatures. Carignano *et al.*<sup>14</sup> found that the cubic symmetry of  $\text{MaPbI}_3$ , is almost always broken locally and that the cubic symmetry found in experiments can be interpreted as averaging of distorted geometries. The HA and QHA are hence not directly applicable to these phases.

An alternative way to study phase transitions is a direct simulation of the atomistic dynamics through *ab initio* molecular dynamics (MD). Unfortunately, due to the high computational cost of *ab initio* methods, the affordable time-scales are limited. Classical force fields on the other hand would provide the required performance but their accuracy is limited by the simple functional form of the interaction potentials. Recently, his gap between performance and accuracy has been filled by machine learned potentials (MLPs). Once trained on high accuracy *ab initio* data, MLPs are able to predict

Department of Physics, University of Basel, Klingelbergstrasse 82, 4056 Basel, Switzerland. E-mail: [jonas.finkler@unibas.ch](mailto:jonas.finkler@unibas.ch), [stefan.goedecker@unibas.ch](mailto:stefan.goedecker@unibas.ch)

† Electronic supplementary information (ESI) available. See DOI: <https://doi.org/10.1039/d2ma00958g>



energies and forces with almost *ab initio* accuracy at a fraction of the computational cost.<sup>20,21</sup>

In this paper, we developed a MLP to study phase transitions in methylammonium lead iodide (MaPbI<sub>3</sub>), where the B and X sites are formed by lead and iodine atoms and the A sites are occupied by the organic molecule methylammonium (MA) (CH<sub>3</sub>NH<sub>3</sub>).

Depending on the temperature, MaPbI<sub>3</sub> can be found in three different phases in experiment. At low temperatures, MaPbI<sub>3</sub> adapts an orthorhombic phase with *Pnma* symmetry. Upon heating above 160 K, MaPbI<sub>3</sub> undergoes a first order phase transition to a tetragonal phase with *I4/mcm* symmetry. Under a further increase of the temperature above 330 K, the material was observed to undergo a second order phase transition to a cubic phase with *Pm3m* symmetry.<sup>22</sup>

A recent theoretical structure search,<sup>23</sup> based on the minima hopping method,<sup>24,25</sup> discovered two additional non-perovskite polymorphs of MaPbI<sub>3</sub> that, according to DFT calculations based on the strongly constrained and appropriately normed<sup>26</sup> (SCAN) density functional, appear to be significantly lower in energy than the experimentally observed phases. The energetically lowest polymorph is the double-delta structure, which has a unit cell containing 48 atoms and consists of edge-sharing octahedra forming pillars that are surrounded by Ma molecules. Results based on the random phase approximation (RPA) also support that the double-delta phase is lower in energy than the perovskite phases.<sup>27,28</sup> The reported delta polymorph is higher in energy than the double delta phase but has a lower energy than the perovskite phases and consists of a unit cell containing 24 atoms, where face-sharing octahedra form pillars, arranged in a hexagonal pattern, that are uniformly surrounded by Ma molecules. The double-delta phase resembles the  $\delta$  phase observed in CsPbI<sub>3</sub>,<sup>29</sup> while the delta phase is similar to the  $\delta$  phase of FaPbI<sub>3</sub>.<sup>7,30</sup> The ground state geometries of the two delta and the three perovskite phases of MaPbI<sub>3</sub> are shown in Fig. 1. A more detailed overview over the unit cells and geometries used for the simulations presented in this paper can be found in the ESI.†

The delta phase has also previously been investigated by Thind *et al.*<sup>31</sup> In both CsPbI<sub>3</sub> and FaPbI<sub>3</sub>, a transition to the non-perovskite  $\delta$  phases can be observed. The stability of the perovskite phases of MaPbI<sub>3</sub> is therefore rather surprising,

given that the newly discovered non-perovskite phases should be energetically preferred. Understanding this unexpected behaviour using our MLP is unfortunately not straight forward. The large structural difference between the delta and the perovskite phases, suggests a complex reaction pathway, that would require unfeasibly long simulation times to explore through MD. Similarities can be found in the structurally similar phase transition between the hexagonal delta and cubic phases of FaPbI<sub>3</sub>. This transformations shows a complex reaction pathway with high barriers, that result in a large hysteresis of the transition with respect to temperature.<sup>32</sup>

To circumvent the problem of the high barriers, we extended our funnel hopping Monte Carlo (FHMC) method<sup>33</sup> to periodic systems and applied it to MaPbI<sub>3</sub> using our newly developed MLP. Similarly to a MD simulation, FHMC samples the Boltzmann distribution at a given temperature. However, it is not limited to a physical trajectory and carefully designed FHMC moves allow the Monte Carlo (MC) walker to jump between different phases, that are separated by high free energy barriers, without violating the detailed balance condition. Sampling of the true potential energy surface (PES) allows us to obtain phase transition temperatures without using any approximate expansion of the PES like in the HA and QHA. Additionally, the FHMC method is particularly well suited for applications with MLPs. Due to the global moves, the high energy transition states are not visited and do not need to be included in the training data.

## 2 The FHMC method

Many material properties emerge at finite temperatures due to the thermal motion of atoms. To compute these properties, an ensemble of geometries, distributed according to the Boltzmann distribution, has to be considered instead of a single ground state geometry. One possibility to generate such an ensemble are MD simulations coupled with thermostats,<sup>34</sup> where Newtons equations of motion are solved to generate a trajectory. Another widely used approach are MC simulations that do not generate a trajectory but instead perform a random walk over the configuration space. In each step, a new configuration is proposed and

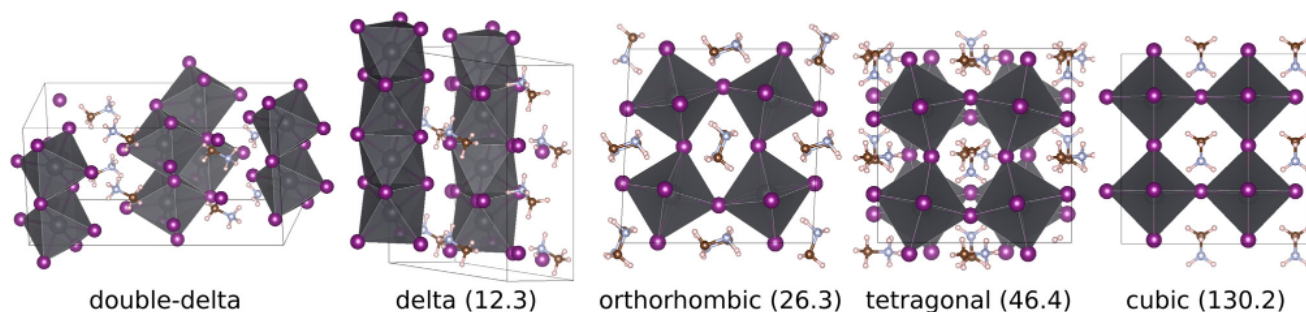


Fig. 1 Ground state geometry of the two delta and the three perovskite phases of MaPbI<sub>3</sub>. The SCAN DFT ground state energy relative to the double-delta phase is given in parenthesis (meV f.u.<sup>-1</sup>). Note that the cubic geometry shown is only a local minimum in a smaller unit cell. The supercell shown here corresponds to a saddle point. Additional pictures can be found in the ESI.†



then either accepted or rejected according to the Metropolis–Hastings criterion,<sup>35</sup> which ensures, that the samples obtained during the random walk are distributed according to the Boltzmann distribution. The way new configurations are proposed is critical. In traditional MC simulations, local MC moves are used, where one or multiple atoms are displaced slightly. The magnitude of these displacements has to be chosen carefully. Large displacements are favourable, since they allow for a rapid exploration through the whole system. However, too large displacements lead to structures that are, in most cases, high in energy and will result in a low acceptance rate of the MC moves. Therefore a trade-off has to be made to determine the optimal magnitude of the displacements.

A funnel is a feature of the PES, where minima that are close in energy are arranged in a cascading manner towards the global minimum. Often, multiple funnels can be present, and the low lying minima from each funnel are separated by very high energy barriers. Due to the finite displacements, the MC walker is forced to take several steps across the barrier and accept some of the high energy transition states, even when the energy on the other side of the barrier is low. The high barriers in multi funnel systems can therefore slow down or even completely prevent complete sampling within feasible simulation times. This problem is known as broken ergodicity. Even though MC sampling of the Boltzmann distribution is, in theory, ergodic, meaning that every point on the PES will eventually be visited according to its Boltzmann probability, ergodicity can be broken in finite simulations of multi-funnel systems with high separating barriers. To overcome this problem, many algorithms, such as umbrella sampling,<sup>36</sup> the stochastic self-consistent harmonic approximation,<sup>37</sup> metadynamics,<sup>38</sup> multicanonical sampling,<sup>39</sup> Wang–Landau sampling,<sup>40</sup> nested sampling,<sup>41</sup> the auxiliary harmonic superposition method,<sup>42</sup> lattice switch MC<sup>43,44</sup> or Boltzmann generators<sup>45</sup> have been proposed in the past. Similarly, thermodynamic integration<sup>46</sup> can be used to directly compute absolute free energies.

We recently developed a method called Funnel Hopping Monte Carlo<sup>33</sup> (FHMC), that enables efficient MC simulations for multi funnel systems. The method introduces a global MC move, that enables the MC walker to jump directly from one low energy region to another, bypassing the high energy barriers entirely. Inspired by smart darting MC,<sup>47</sup> FHMC takes advantage of the fact, that global optimization algorithms such as minima hopping<sup>24,25</sup> are much more efficient than MC simulations in exploring the PES, since they do not have to generate a Boltzmann distribution. Therefore feedback mechanisms can be used that rapidly push the system out of funnels and across high barriers. The knowledge about the different minima can then be used during the MC simulation to introduce a new type of MC move, that directly targets the low energy region around other minima. These new moves have to be designed carefully, such that the detailed balance condition is not violated and the correct Boltzmann distribution is sampled by the MC walker. FHMC is therefore related to smart darting MC and lattice switch MC, which also use local minima to construct global MC moves. In these two methods, the

atomic displacements from the nearest local minimum are directly added to the geometry of another local minimum to obtain the trial configuration. This will in most cases result in a high energy and hence low acceptance probability of the proposed move necessitating additional biasing in the case of lattice switch MC.<sup>43,44</sup>

The FHMC method therefore employs a different method to construct global MC moves. Gaussian mixtures (GMs) are used to approximate the Boltzmann distribution around the local minima. The GMs are fit, to samples obtained from MC simulations constrained to the region around the minima using the Expectation–Maximization algorithm.<sup>48</sup> During the final MC simulation, global moves are proposed by sampling trial configurations from these GMs. A good fit of the GMs hence ensures that the proposed configurations are low in energy and have a high chance of being accepted.

The FHMC method was originally developed for systems with free boundary conditions, such as atomic clusters. The methods performance was demonstrated on the 38 atom Lennard-Jones (LJ) and 75 atom LJ clusters, which are known for their double funnel PES. The 75 atom LJ cluster is a particularly difficult system to treat with MC simulations, since not even parallel tempering<sup>49,50</sup> simulations converge.<sup>51,52</sup>

In this work, we set out to extend the FHMC method to periodic systems and apply it to MaPbI<sub>3</sub>. This requires several adjustments of the FHMC algorithm that will be explained in the next sections. Some of the changes were required because the initial method was proposed for atomic clusters with free boundary conditions and hence the method needed to be adopted to periodic boundary conditions. Other changes were necessary because of the high rotational mobility of the Ma molecules present in MaPbI<sub>3</sub>.

## 2.1 Modification of the method for MaPbI<sub>3</sub>

### 2.1.1 Extension to periodic boundary conditions.

FHMC uses Gaussian mixtures (GMs) to approximate the Boltzmann distribution around local minima. Since atomic systems with free boundary conditions are invariant under rotation, translation and permutation of atoms of the same species, the root mean squared deviation (RMSD) is used to align the current configuration of the MC walker with the reference configuration. This alignment allows for a basis transformation of the atomic displacements that projects out the 6 degrees of freedom associated with translation and rotation.

In systems with periodic boundary conditions, only a finite number of symmetry operations, that preserve the periodic lattice of the unit cell, have to be considered. Since the maximum temperature of 400 K used in our FHMC simulations is below the melting temperature, permutations of atoms do not occur. We therefore only have to consider a fixed number of symmetry operation, that can be computed for the reference configurations obtained from minima hopping using spglib.<sup>53</sup> For each operation that we have to consider, we first apply it to the current configuration of the MC walker. We then find the translation that minimizes the mass weighted RMSD by



superimposing the centers of mass of the current configuration  $\mathbf{r}$  and the reference  $\mathbf{R}$ .

$$\sum_i^{N_{\text{at}}} \frac{m_i \vec{r}_i}{m_{\text{tot}}} = \sum_i^{N_{\text{at}}} \frac{m_i \vec{R}_i}{m_{\text{tot}}} \quad (1)$$

The atomic displacement vectors  $\mathbf{D} = \mathbf{r} - \mathbf{R}$ , are then projected onto the basis vectors  $\mathbf{B}_j$  to obtain a vector representation  $\mathbf{V}$  of the current configuration. Here, the vectors  $\mathbf{r}$  and  $\mathbf{R}$  contain all  $3N_{\text{at}}$  atomic coordinates of the current and the reference configuration respectively ( $\mathbf{r} = (r_{1x}, r_{1y}, r_{1z}, r_{2x}, \dots, r_{N_{\text{at}}z})^T$ ). The  $3N_{\text{at}} - 3$  basis vectors  $\mathbf{B}_j$  are chosen such that they are orthogonal to the three vectors  $\mathbf{T}_1$ ,  $\mathbf{T}_2$  and  $\mathbf{T}_3$  which are given below.

$$\mathbf{T}_1 = \begin{pmatrix} m_1/m_{\text{tot}} \\ 0 \\ 0 \\ m_2/m_{\text{tot}} \\ 0 \\ 0 \\ m_3/m_{\text{tot}} \\ \vdots \end{pmatrix} \quad \mathbf{T}_2 = \begin{pmatrix} 0 \\ m_1/m_{\text{tot}} \\ 0 \\ 0 \\ m_2/m_{\text{tot}} \\ 0 \\ 0 \\ \vdots \end{pmatrix} \quad \mathbf{T}_3 = \begin{pmatrix} 0 \\ 0 \\ m_1/m_{\text{tot}} \\ 0 \\ 0 \\ m_2/m_{\text{tot}} \\ 0 \\ \vdots \end{pmatrix} \quad (2)$$

To obtain the  $\mathbf{B}_j$ , which are also orthonormal to each other, the modified Gram–Schmidt process is used. Since the translation of the configuration has been fixed, the projection of the displacement vector  $\mathbf{D}$  onto the  $\mathbf{T}_i$  will always be zero because of eqn (1). Our Gaussian mixtures, which are formed by a sum of Gaussian functions  $\mathcal{N}_i$  weighted by factors  $a_i$ , live in the space spanned by the basis vectors  $\mathbf{B}_j$ . The total probability of the current configuration can then be evaluated as the mean over all  $N_{\text{sym}}$  applicable symmetry operations.

$$P_{\text{GM}}(\mathbf{V}) = \frac{1}{N_{\text{sym}}} \sum_i^{N_{\text{sym}}} \sum_j^{N_{\text{GM}}} a_j \mathcal{N}_j(\mathbf{V}_i) \gamma \quad (3)$$

Here  $\mathbf{V}_i$  is the vector representation that is obtained after applying the  $i$ th symmetry operation onto the atomic positions and  $\gamma$  is the degeneracy of the unit cell choice. In our FHMC simulations, we only include one reference for each phase. However, due to symmetry, some of the phases have a degeneracy related to the choice of the unit cell. For example, when the cubic phase undergoes a transition to the tetragonal phase, three equivalent possibilities exist in which the symmetry can be broken. We therefore use the ratio between the numbers of symmetries of the highest symmetry cubic lattice and the number of symmetries of each phase for  $\gamma$ .

To propose a FHMC move, the process outlined above is reversed. First a random phase  $j$  is select and then a sample  $\mathbf{V}'$  is drawn from the respective GM. The sample is then transformed into an atomic displacement by applying the transformation from the coordinate system spanned by the basis vectors  $\mathbf{B}$  to Cartesian coordinates. To obtain the new configuration,

the displacement is added onto the reference configuration. The new configuration  $\mathbf{r}'$  is then accepted with the probability  $\alpha_{\mathbf{r} \rightarrow \mathbf{r}'}^{\text{FHMC}}$ .

$$\alpha_{\mathbf{r} \rightarrow \mathbf{r}'}^{\text{FHMC}} = \min \left[ 1, \exp \left( \frac{E(\mathbf{r}) - E(\mathbf{r}'(\mathbf{V}'))}{k_{\text{B}} T} \right) \frac{P_i(\mathbf{V}(\mathbf{r}))}{P_j(\mathbf{V}')} \right] \quad (4)$$

Here  $E(\mathbf{r})$  and  $E(\mathbf{r}')$  are the energies of the old and new configurations,  $T$  is the temperature and  $k_{\text{B}}$  the Boltzmann constant. Unlike in standard MC simulations, where the trial step distribution is symmetric, the probability  $P_j(\mathbf{V}')$  of proposing the new configuration and the probability  $P_i(\mathbf{V})$  of proposing the inverse move have to be included into the acceptance/rejection step of eqn (4).

**2.1.2 Changes in volume.** To allow for thermal expansion, we included the volume of the unit cell into the vector representation. Changes in the shape of the unit cell were not included, since FHMC moves between the different phases allow already for the simulation to access differently shaped unit cells. When a structure is transformed to its vector representation, it is first scaled to match the size of the reference unit cell, before the displacement vector is computed. During the sampling of a new configuration, the structure is first constructed, as described above, and then rescaled, to match the volume that is sampled from the GM.

**2.1.3 Special treatment of the methylammonium molecules.** Even at lower temperatures, where the  $\text{MaPbI}_3$  is in a crystalline phase, the Ma cations can rotate almost freely within the cavities formed around them by the lead-iodine lattice. This rotational motion would be extremely difficult to capture even with a large number of Gaussians included in the GMs. We therefore decided to only include the center of mass of each Ma molecule into the GM, like any other atomic position. When a FHMC move is performed, the Ma molecule is cut out from its original environment and placed to the position of the new center of mass sampled from the GM. Since this process is reversible, detailed balance is preserved.

**2.1.4 Replica exchange.** Even with the special treatment of the Ma molecules included into the method, acceptance rates of the FHMC moves are vanishingly low and only few moves are accepted during long simulations. This behaviour is due to the fact that the special treatment of the Ma molecules removes the ability of the GMs to capture any correlation between the Ma orientation and its internal configuration as well as the surrounding lead and iodine atoms positions. This results in a small overlap between the true Boltzmann distribution and the approximation of the GMs.

We therefore decided to couple the method with Hamiltonian replica exchange MC.<sup>54,55</sup> We defined an artificial PES (APES) using the GMs, such that our FHMC moves are trivially accepted on the APES. The intermediate replicas will then allow for an exchange of configurations between the well sampled APES and the PES.

The GMs approximate the Boltzmann distribution  $P_{\text{B}}$  as follows.

$$P_{\text{B}}(\mathbf{r}) = \frac{1}{Z} \exp \left( \frac{-E(\mathbf{r})}{k_{\text{B}} T} \right) \approx P_{\text{GM}}(\mathbf{r}) \quad (5)$$



We can reverse this equation to obtain an approximation of the PES  $E_{GM}$  from the GM.

$$E_{GM}(\mathbf{r}) = -\ln(P_{GM}(\mathbf{V}(\mathbf{r})))k_B T \quad (6)$$

As only the center of mass of the Ma molecules enters the GM, an additional internal energy term  $E_{Ma}$  is added for each Ma molecule to obtain the total energy  $E_{APES}$ .

$$E_{APES}(\mathbf{r}) = -\ln(P_{GM}(\mathbf{V}(\mathbf{r})))k_B T + \sum_j^{N_{Ma}} E_{Ma_j}(\mathbf{r}) \quad (7)$$

The energy  $E_{Ma}$  is obtained from a neural network potential (NNP) trained to reproduce the energy of a single Ma molecule in vacuum. Forces can be obtained by differentiating  $E_{APES}$  with respect to the atomic coordinates. It should be noted, that partial derivatives from  $\frac{dV(\mathbf{r})}{d\mathbf{r}}$  have to be included because the center of mass of the structures is fixed. This results in invariance of  $E_{APES}$  under translation.

As we can see from eqn (4), FHMC moves will always be accepted on the APES, since the Boltzmann probability of  $E_{APES}$  is identical to the trial probability of the FHMC moves. The energy contributions  $E_{Ma_j}(\mathbf{r})$  also cancel out in the FHMC moves, since the internal geometry of the Ma molecules is left unchanged by the FHMC moves and hence, the internal energy remains constant. Therefore, performing an FHMC simulation on the APES will converge extremely fast, since with every FHMC move, a new structure is generated which is, up to the internal geometry of the Ma molecules, completely uncorrelated to the previous geometry.

The MC simulation on the physical PES is then coupled to the APES using replica exchange MC. A series of intermediate PESs are defined using a parameter  $\lambda$  that varies from 0, at the physical PES, to 1 at the APES.

$$E_\lambda(\mathbf{r}) = (1 - \lambda)E(\mathbf{r}) + \lambda E_{APES}(\mathbf{r}) \quad (8)$$

We also included replicas at different temperatures, that are arranged in a geometric series. Replica exchange moves are therefore performed on a 2 dimensional grid in the final simulations.

Configurations between neighboring simulations are then exchanged at regular intervals according to the Metropolis-Hastings criterion. The acceptance probability  $\alpha^{RX}$  for replica exchange moves between two replicas a and b with configurations  $r_a$  and  $r_b$  and energy expressions  $E_a$  and  $E_b$  at temperatures  $T_a$  and  $T_b$  are given as follows.

$$\alpha^{RX} = \min \left[ 1, \exp \left( \frac{E_a(\mathbf{r}_a) - E_a(\mathbf{r}_b)}{T_a k_B} - \frac{E_b(\mathbf{r}_a) - E_b(\mathbf{r}_b)}{T_b k_B} \right) \right] \quad (9)$$

**2.1.5 Other simulation details.** We used hybrid MC<sup>56,57</sup> with 20 MD timesteps of 0.8 fs each for the local MC moves. To avoid large differences in timescale between the vibrations of the light hydrogen and heavy lead atoms, we set all masses to the mass of a hydrogen atom. MC moves changing the volume were included with a probability of 20%. The GMs were fit to 10<sup>5</sup> samples using our symmetry adapted version of the Expectation-

Maximization algorithm<sup>33</sup> with one Gaussian per symmetry. FHMC moves were attempted with a probability of 10%. We used a 2D grid of replicas with 24 different temperatures from  $T_{min} = 40$  K to  $T_{max} = 400$  K arranged in a geometric series and 10 different values of  $\lambda$ , which results in a total of 240 replicas. Replica exchange moves were performed between neighboring replicas in an alternating fashion every 5 MC iterations. We collected samples from our FHMC simulations during 200 000 iterations after an equilibration period that lasted for 150 000 iteration. We used unit cells containing 8 functional units for each phase as shown in Fig. 1. Additional details on the choice of unit cells can be found in the ESI.†

### 3 Neural network potential

To obtain predictive power, a faithful representation of the PES is needed. It was previously shown, that density functional theory using the SCAN density functional is in good agreement with RPA results<sup>28</sup> and experimental results.<sup>58</sup> Unfortunately, performing FHMC simulations on a SCAN-DFT PES is not feasible due to the high computational cost and the large number of energy and force calculations that are required. We therefore decided to train a high dimensional neural network potential<sup>59</sup> (HDNNP) using SCAN-DFT training data. We used the plane wave code VASP<sup>60-64</sup> to perform DFT calculations. Details on the DFT settings are given in the ESI.† Unlike previously published machine learned potentials for MaPbI<sub>3</sub>,<sup>65,66</sup> we also included the two non-perovskite phases in our training data. The HDNNP was trained by the RuNNer software<sup>67,68</sup> using energies and forces. For the prediction of energies and forces, we employed our own code<sup>69</sup> in the FHMC simulations and n2p2<sup>70</sup> in the MD simulations. Atom centered symmetry functions (ACSFs)<sup>71</sup> were applied as atomic environment descriptors. A detailed list of the parameters of the ACSFs can be found in the ESI.† Neural networks consisting of two hidden layers with 10 nodes each were employed for each element, resulting in 3545 free parameters that were optimized during training. As activation function, the hyperbolic tangent and a linear function were used for the hidden and output layers respectively.

To generate the training dataset, we took an active learning approach. We first trained a set of HDNNPs on a small set of structures that were sampled from a MC simulation driven by a classical force field<sup>72</sup> and then recomputed with DFT. We then performed MC simulations for all 5 crystalline phases on the HDNNP-PES. The standard deviation between the energies predicted by the different HDNNPs, trained on the same data but with different initializations of the weights and biases, was applied to estimate the accuracy of the HDNNP's prediction for a given structure. The energies and forces of structures with the lowest accuracy were then recomputed with DFT and added to the dataset. This process was repeated until a satisfying accuracy was reached. The final dataset consists of 34 400 structures. We randomly selected 10% of the structures as a test set and used the remaining structures to train the HDNNPs. The resulting HDNNPs are highly accurate and can run stable MD simulations



at up to 400 K. However, we found that in some rare cases, during our FHMC simulations, structures were generated by the FHMC moves, that would be extremely high in energy due to unphysically short bond lengths. As the training data for our HDNNPs was sampled from the Boltzmann distribution, such high energy structures are not present and the HDNNP prediction will be wrong. In some cases the HDNNPs would severely underestimate the energy which would lead to the acceptance of a highly unphysical configuration. To counteract this problem, we used the average over the predictions of five HDNNPs that were trained with a different weight initialization. A small positive energy bias was then added to configuration for which the prediction accuracy was low.

$$E = \bar{E} + \alpha\sigma^2 \quad (10)$$

Here  $\bar{E}$  is the mean of the five energy predictions and  $\sigma$  the standard deviation. The parameter  $\alpha$  was set to  $2.0 \text{ Ha}^{-1}$ . This energy bias comes at little cost, since the computationally most expensive part of the HDNNP evaluation, the computation of the ACSFs, has to be performed only once. During a typical FHMC simulation, the average value of  $\sigma$  at the simulation on the true PES ( $\lambda = 0$ ) is around  $14.9 \text{ meV}$  ( $0.15 \text{ meV}$  per atom). The maximum value was found at  $63.3 \text{ meV}$  ( $0.66 \text{ meV}$  per atom), which results in an energy bias of  $0.29 \text{ meV}$  ( $0.003 \text{ meV}$  per atom). Only at replicas with  $\lambda > 0$  a significant influence of the energy biasing is present. The total energy and force RMSD of our fit is  $0.885 \text{ meV}$  per atom and  $118.4 \text{ meV } \text{\AA}^{-1}$  on the training set and  $1.032 \text{ meV}$  per atom and  $120.0 \text{ meV } \text{\AA}^{-1}$  on the test set. Correlation plots can be found in the ESI.† The training dataset and the final parameters for the trained HDNNPs were published online.<sup>73</sup>

Table 1 shows the energy of the local minimum configuration for all phases considered in this paper. Energies per functional unit are given for DFT optimized geometries, the energy predicted by the NNP for the same geometry and the NNP energy after the lattice and atom positions were further relaxed on the NNP PES. The lattice parameters of the orthorhombic phase predicted by the NNP are in close agreement with the values obtained from DFT and experimental results<sup>22</sup> at 10 K as can be seen in Table 2.

The values for the cubic phase were obtained using a small unit cell containing only a single functional unit. When expanded to a  $2 \times 2 \times 2$  super cell, the cubic geometry is not a minimum anymore, but a saddle point.

We used a radial cutoff of 12 Bohr for our ACSFs. This distance is roughly equal to the distance between neighboring

**Table 2** Lattice parameters ( $a$ ,  $b$  and  $c$ ) [ $\text{\AA}$ ] and volume [ $\text{\AA}^3$ ] of the orthorhombic phase obtained from DFT, the NNP and experiment<sup>22</sup> at 10 K

	$a$	$b$	$c$	Volume
SCAN	8.99073	12.71980	8.62164	985.973
NNP	9.00764	12.69012	8.59005	981.912
Experiment	8.81155(6)	12.58714(9)	8.55975(6)	949.38(1)

lead-iodine octahedra in the perovskite phases. It is important to note, that the HDNNP is able to describe interactions with a range of up to twice the maximum cutoff distance of the ACSFs, as atoms that are present in between the interacting atoms include both atoms inside their cutoff radius. To confirm, that the interaction between neighbouring Ma cations is adequately described by our HDNNPs, we placed two Ma molecules inside neighboring lead-iodine cages. The Pb and I atoms were placed at their high symmetry positions from the cubic phase. This way, the local environment of the Pb I cage, as seen by the Ma cation, is completely symmetric and invariant when a point symmetry operation is applied to the Ma cation through the cage center. We then compared the energies of the two cases, where both Ma cations were in parallel and anti-parallel configurations with DFT references. Due to the symmetry, the only difference in the environments of the Ma molecules is the Ma molecule in the neighboring cage. This allows us to test if the interaction between neighbouring Ma molecules is adequately described, by eliminating the interaction between the Ma molecules and the surrounding cage. The HDNNPs predict that on average, the parallel configuration is preferred by  $61.3 \text{ meV}$  which agrees well with the DFT result of  $71.6 \text{ meV}$ .

## 4 Results

### 4.1 FHMC study of the experimentally known phases

In a first step we ran FHMC simulation that only included the three experimentally known phases of  $\text{MaPbI}_3$ . We also performed MD simulations using lammmps<sup>74</sup> and the HDNNP code n2p2<sup>70</sup> to validate our FHMC results. As we used variable cell shape MD, the determination of the phase from the lattice parameters is difficult. The variability of the lattice during the MD is close in magnitude to the variability between the different phases. This problem is not present in the FHMC simulations, since there the ratio between the lattice parameters is kept fixed to the value of the optimized unit cell and only the volume is allowed to change. However, an identification of a given phase using the lattice parameters is also not always possible. We observed, that sometimes geometries in one lattice are present, that show a tilting of the lead-iodine octahedra that is typical for another phase. This effect is especially pronounced for the tetragonal and cubic phases that have very similar lattice constants. We therefore used an order parameter, to determine the phase transition temperatures between the orthorhombic, tetragonal and cubic phases. This order parameter is given by the mean absolute value of the normalized dot product between vectors that span the three diagonals of neighboring lead-iodine

**Table 1** Energies ( $\text{meV f.u.}^{-1}$ ) of the phases, computed with DFT and the NNP. All energies are relative with respect to the DFT energy of the double-delta phase

Phase	SCAN	NNP	NNP relaxed
Double-delta	0.0	1.5	-2.2
Delta	12.3	20.6	11.1
Orthorhombic	26.3	28.7	26.1
Tetragonal	46.4	59.2	49.6
Cubic	130.2	138.3	124.7



octahedra pointing along the same axis. We hence obtain three order parameter values (one per diagonal of the octahedron) for each configuration, that indicate the tilting between neighboring lead-iodine octahedra. The mathematical details of the order parameter and an illustration of the vectors used to compute it can be found in the ESI.†

In Fig. 2, histograms of the order parameter for different temperatures are shown. The MD simulations were performed at temperatures ranging from 25 K to 400 K with a spacing of 25 K. The order parameters were computed for a duration of 25 000 ps after an equilibration period that lasted for the same duration. MD simulations that were initialized with a tetragonal or cubic geometry would only extremely rarely undergo a phase transition to the orthorhombic phase at temperatures close to the phase transition temperature, while the reverse transition was readily observed. We therefore initialized our simulation with the orthorhombic ground state geometry. Our FHMC simulations however, converge to the same relative probability of the different phases, independent of the phase that was used during initialization, since the FHMC moves allow for direct transitions between phases and are not hindered by energetic or dynamics barriers.

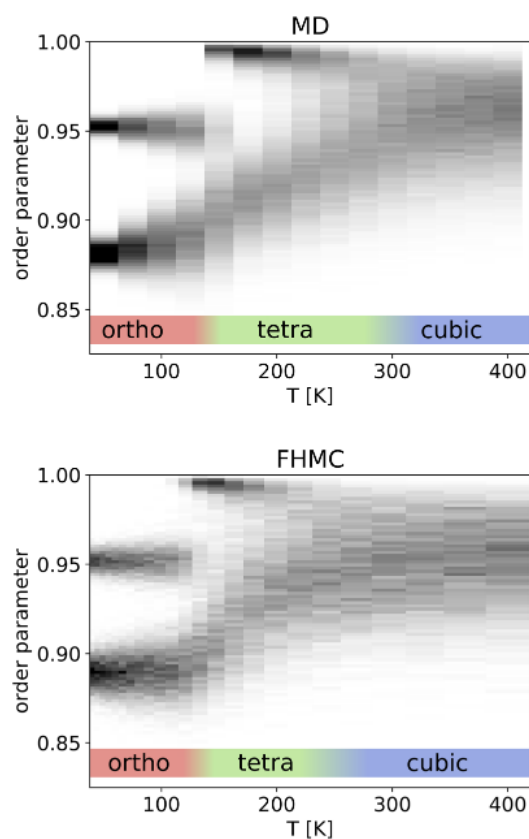


Fig. 2 Histogram of the order parameter versus temperature obtained from MD and FHMC simulation. The orthorhombic phase can be identified by the presence of an order parameter value around 0.95. In the tetragonal phase this order parameter value disappears and values close to 1 are present. At higher temperatures the two distinct peaks in the order parameter merge into a single peak which marks the transition to the cubic phase.

The phase transition from the orthorhombic to the tetragonal phase can clearly be identified in both, the FHMC and the MD results, around 130 K by the disappearance of order parameter values around 0.95. The transition between the tetragonal and cubic phase is less clearly identifiable and occurs around 300 K in the MD simulation, where the two peaks in the order parameter histogram merge into a single peak. The FHMC results appear to show a slightly lower tetragonal cubic transition temperature. This is because of the high sensitivity of the transition to the lattice parameters.<sup>58</sup> With increasing temperature, the ratio between the two lattice parameters of the tetragonal phase will get closer to one. Since this ratio is kept fixed to the ratio of the ground state geometry in our FHMC simulations, the tetragonal phase will necessarily be slightly strained at higher temperatures. Using the average lattice parameters of the tetragonal phase at 250 K obtained from variable cell shape MD in our FHMC simulations, we obtain a higher transition temperature that agrees extremely well with the MD results. The order parameter histogram of this simulation can be found in the ESI.† To keep our simulations consistent and to not introduce any bias by picking lattice parameters from different temperatures, we decided to use lattice parameters from ground state geometries.

#### 4.2 FHMC study including the two delta phases

After confirming that FHMC is able to reproduce results obtained from MD simulations for the three experimental perovskite phases, we continue our investigation by performing FHMC simulations that include the two delta phases in addition to the three perovskite phases. Phase transitions involving the delta phases cannot be simulated using classical MD simulations. Both delta phases appear to be stable at our maximum simulation temperature of 400 K. We would therefore need to go to even higher temperatures or longer timescales to access the transition states, that connect the delta phases with the perovskite phases. Due to the large structural difference between the phases, complex transition states, that are not included in the training data of our HDNNPs are expected, rendering our HDNNPs inaccurate. Furthermore, we expect that the timescales needed for such transitions would be prohibitively large. This is supported by the fact, that even transitions between the structurally very similar orthorhombic and tetragonal phases are hard to observe in our MD simulations. Chen *et al.*<sup>32</sup> experimentally investigated the structurally similar transition between the delta and cubic phases of  $\text{FAPbI}_3$  and found a large energetic barrier and reported complete kinetic trapping of the material in the higher energy cubic phase after cooling the material from 400 K to 200 K within 80 minutes. Clearly, such timescales are not accessible by any form of MD simulations. A large hysteresis of the transition between heating and cooling further supports the high free energy barrier and complex transition pathway.

FHMC simulations can avoid this problem of high barriers and allow us to determine phase transition temperatures involving the delta phases without the need to also explore the large configuration space of transition states while still taking anharmonic effects into account without any approximation.



Unlike for the experimental phases, no transition from a delta phase to any other phase within the same lattice configuration was ever observed in our FHMC and MD simulations. We can therefore directly use the lattice configuration as an indicator of the non-perovskite phase.

A plot showing the probability of finding the system in the double-delta, delta, or a perovskite phase *versus* temperature is shown in Fig. 3. At low temperatures, the double delta phase is dominant. The delta phase has only for a small temperature window a significantly non-zero probability. At higher temperatures above 200 K, the system is most likely to be found in the perovskite phases.

We also computed free energies using the HA and QHA for all phases, except the cubic phase using the phonopy code<sup>75</sup> and our HDNNP. We excluded the cubic phase, since it does not relate to a minimum on the PES. Both, the HA and QHA, free energies are in qualitative agreement, indicating that effects of thermal expansion are not the main reason of the anharmonicity of the system. The relative free energies as well as plots of the phonon density of state for all phases are included in the ESI.†

We found, that even for the non-cubic phases, extremely tight settings, such as tight geometry optimization thresholds and small displacements for the calculation of the force constants through finite differences were necessary to avoid imaginary frequency modes. Similar finding were also reported by Marronnier *et al.*<sup>76</sup> Compared to a DFT PES, where noise is present smaller displacements are not problematic on our HDNNP PES, since it is an analytical function, that can be evaluated with almost machine precision. Geometry optimizations were performed using the vc-SQNM algorithm.<sup>77</sup>

We then used the free energies computed within the QHA to calculate probabilities of finding the system in a given phase for the same unit cells that were used for the FHMC and MD simulations. The results are shown in Fig. 4.

At low temperatures, the double-delta phase is most stable. Above 180 K the orthorhombic phase is predicted by the QHA to be thermodynamically more stable. This is surprisingly close to our FHMC results, that predict that the double-delta phase is

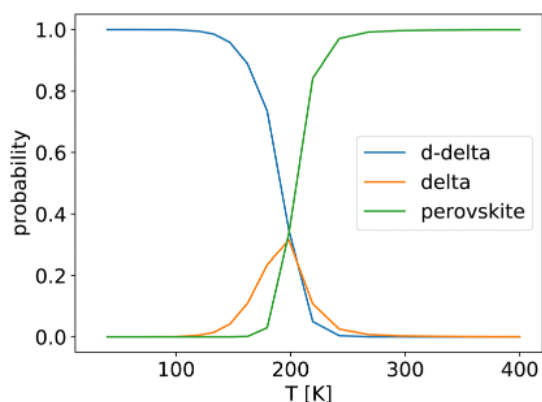


Fig. 3 Probability of finding the FHMC walker in a given lattice configuration *versus* temperature.

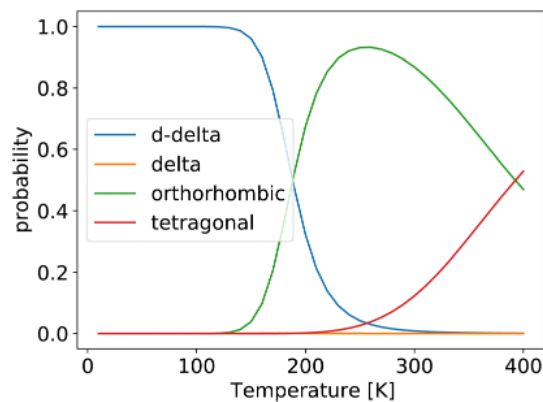


Fig. 4 Probability of finding the system in a given phase, computed using the quasi-harmonic approximation.

only preferred up to a temperature of 200 K. However, the HA and QHA further predict, that the orthorhombic phase is preferred over the tetragonal phase up to a temperature of 380 K, which is inconsistent with experimental results as well as our FHMC and MD results. The correct prediction of the disappearing of the double delta phase above 200 K by the QHA, is therefore most likely an accidental result caused by error cancellation.

We also devised an additional test to further investigate the anharmonicity of the vibrational modes found by the HA. For this, we made an estimate  $\omega_{\text{fit}}$  of each vibrational frequency, that is not based on the second derivative of the potential energy at the local minimum but instead uses a quadratic fit of the potential energy through points placed further away from the minimum along the vibrational mode. These points were chosen such that they represent a realistic displacement from the local minimum as it could be observed during a finite temperature simulation. We first used the harmonic approximation to estimate the magnitude of the displacements, at which an energy of  $\frac{1}{2}k_{\text{B}}T$  above the local minimum energy should be expected. This procedure was then repeated multiple times using the fitted curvature of the potential energy instead of the HA, such that a consistent fit was obtained. The converged fits were then used to estimate the vibrational frequencies  $\omega_{\text{fit}}$ . The ratio between the  $\omega_{\text{fit}}$  calculated for a temperature of 300 K and the harmonic frequencies  $\omega_{\text{HA}}$  serves as a rough measure of the anharmonicity of each vibrational mode and are shown in Fig. 5. The results show the presence of anharmonic modes in all four phases. Interestingly, there seem to be fewer anharmonic modes in the double delta and the orthorhombic phase than in the delta and tetragonal phase. This might be an indication as to why the HA performs better for these two phases.

In general, however, it is not known, up to which temperatures the HA can be trusted and how strong the influence of the anharmonicity is in the final results. For example, Thind *et al.*<sup>31</sup> also calculated free energies using the QHA for the delta and cubic phases and found a transition temperature of 750 K. This again is inconsistent with our FHMC results, which suggest a much lower transition temperature. Furthermore, it was also





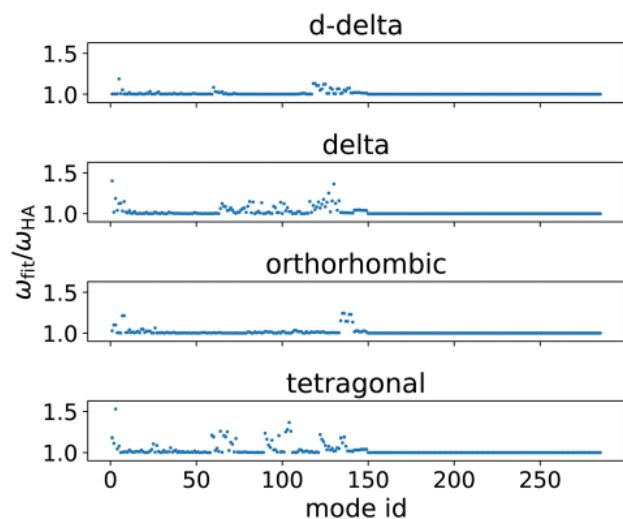


Fig. 5 Ratio between the vibrational frequencies  $\omega_{\text{fit}}$  and  $\omega_{\text{HA}}$ . Unlike the HA, which is based on the second derivatives of the potential energy at the local minimum, the fitted frequencies are obtained from fitting a quadratic approximation of the potential energy using larger displacements along vibrational modes.

reported that the HA and QHA fail to assign the lowest free energy to the experimentally found tetragonal phase of the structurally similar system of  $\text{CsSnI}_3$ .<sup>78</sup>

These results underline the high anharmonicity of the PES of perovskite materials and show, that methods beyond the HA and QHA are needed to obtain reliable phase transition temperatures.

## 5 Conclusions

We developed a highly accurate and reliable NNP for  $\text{MaPbI}_3$ , that is trained on data including all three experimentally observed perovskite phases as well as the two theoretically predicted non-perovskite polymorphs. We studied phase transitions in  $\text{MaPbI}_3$  using MD, as well as FHMC, which we extended to periodic systems. The complicated nature of the PES required further modifications of the method, such as a special treatment of the Ma molecules and coupling FHMC with replica exchange MC. The final version of our FHMC method constructs an artificial PES (APES), based on Gaussian mixtures, on which all FHMC moves are accepted. These global MC moves, that directly jump from one phase to another, without violating detailed balance, allow for an extremely efficient sampling of the APES. We then couple a simulation on the proper machine learned PES to this APES through replica exchange. The efficiency of the method is further increased by including replica exchange moves between different temperatures. FHMC directly circumvents the high energy barriers, which makes it particularly well suited for applications based on machine learned potentials, since the complicated transition states do not need to be included in the training dataset.

We validated the method by simulating the phase transitions between the three perovskite phases and comparing our

results to long timescale MD simulations. An order parameter, that measures the tilting between neighboring lead iodine octahedra allows us to clearly identify the transition temperature between the orthorhombic and tetragonal phase at 130 K.

FHMC simulations including the delta and double delta phases, which have a lower potential energy than the perovskite phases, reveal, that above 200 K, the perovskite phases are thermodynamically favoured. This could explain the elusiveness of the delta phases in experiments. At room temperature  $\text{MaPbI}_3$  will readily form the perovskite phases and the low transition temperature combined with the high free energy barriers to the delta phases lead to kinetic trapping when the material is cooled down. A synthesis of the delta phases can therefore be expected to be very challenging and might only be possible under special conditions, such as high pressures as suggested by Flores *et al.*<sup>23</sup> and very slow cooling rates.

A comparison with the QHA supports previous reports of the high anharmonicity of perovskite materials. While the QHA's prediction agrees with our FHMC results, in that the delta phase is only free energetically favoured at low temperatures, it fails to give a reasonable prediction for the orthorhombic to tetragonal phase transition temperature. This suggests, that the QHA's prediction of the delta to orthorhombic phase transition temperature is caused by accidental error cancellation. Furthermore, the QHA cannot directly be applied to the cubic phase, which does not correspond to a local minimum in the PES. Accurate predictions of transition temperatures, therefore require the use of methods beyond the harmonic approximation, such as our FHMC method.

Due to the rotational degrees of freedom of the Ma molecules,  $\text{MaPbI}_3$  turned out to be a particularly challenging system for the application of FHMC. This rare feature of  $\text{MaPbI}_3$  required an additional adaption of the FHMC method, which is a special treatment of the Ma molecules during FHMC moves. With this adaption the FHMC method should be similarly applicable to other perovskite materials with molecular cations, such as  $\text{MaPbBr}_3$  or  $\text{FaPbX}_3$ . For many other perovskites, such as  $\text{CsPbX}_3$ , as well as many other materials FHMC can be directly applied without this adaption. We therefore expect that the method is applicable to a large range of strongly anharmonic systems, such as other perovskite materials, silicates<sup>79</sup> or superionic conductors.<sup>80</sup>

## Author contributions

Both authors jointly contributed ideas for the methods and the content of this paper. JAF implemented the methods, performed the calculations and wrote the first draft of the manuscript. Both author jointly edited the final version of the manuscript.

## Conflicts of interest

There are no conflicts to declare.



## Acknowledgements

We are grateful for financial support from the Swiss National Science Foundation (SNF) (project number 182877) and a joint SNF/DFG project (SPP 2363, SNF project number: 206936). Calculations were performed at sciCORE (<http://scicore.unibas.ch/>) scientific computing center at University of Basel and the Swiss National Supercomputing Centre (CSCS) (project s963). We also want to thank Giuseppe Fiscaro and Ioannis Deretzis for fruitful discussions and Menno Bokdam and Georg Kresse for sharing their RPA results with us.

## References

- J. M. Buriak, P. V. Kamat, K. S. Schanze, A. P. Alivisatos, C. J. Murphy, G. C. Schatz, G. D. Scholes, P. J. Stang and P. S. Weiss, *Virtual Issue on Metal-Halide Perovskite Nanocrystals – A Bright Future for Optoelectronics*, 2017.
- M. A. Green, A. Ho-Baillie and H. J. Snaith, *Nat. Photonics*, 2014, **8**, 506–514.
- A. A. Emery and C. Wolverton, *Sci. Data*, 2017, **4**, 1–10.
- A. Jain, O. Voznyy and E. H. Sargent, *J. Phys. Chem. C*, 2017, **121**, 7183–7187.
- A. M. Glazer, *Acta Crystallogr., Sect. B: Struct. Crystallogr. Cryst. Chem.*, 1972, **28**, 3384–3392.
- A. Glazer, *Acta Crystallogr., Sect. A: Cryst. Phys., Diffraction, Theor. Gen. Crystallogr.*, 1975, **31**, 756–762.
- Z. Li, M. Yang, J.-S. Park, S.-H. Wei, J. J. Berry and K. Zhu, *Chem. Mater.*, 2016, **28**, 284–292.
- I. Deretzis, C. Bongiorno, G. Mannino, E. Smecca, S. Sanzaro, S. Valastro, G. Fiscaro, A. La Magna and A. Alberti, *Nanomaterials*, 2021, **11**, 1282.
- K. Parlinski, Z. Li and Y. Kawazoe, *Phys. Rev. Lett.*, 1997, **78**, 4063.
- P. Pavone, K. Karch, O. Schütt, D. Strauch, W. Windl, P. Giannozzi and S. Baroni, *Phys. Rev. B: Condens. Matter Mater. Phys.*, 1993, **48**, 3156.
- A. Togo, L. Chaput, I. Tanaka and G. Hug, *Phys. Rev. B: Condens. Matter Mater. Phys.*, 2010, **81**, 174301.
- F. Brivio, J. M. Frost, J. M. Skelton, A. J. Jackson, O. J. Weber, M. T. Weller, A. R. Goni, A. M. Leguy, P. R. Barnes and A. Walsh, *Phys. Rev. B: Condens. Matter Mater. Phys.*, 2015, **92**, 144308.
- C. E. Patrick, K. W. Jacobsen and K. S. Thygesen, *Phys. Rev. B: Condens. Matter Mater. Phys.*, 2015, **92**, 201205.
- M. A. Carignano, S. A. Aravindh, I. S. Roqan, J. Even and C. Katan, *J. Phys. Chem. C*, 2017, **121**, 20729–20738.
- A. N. Beecher, O. E. Semonin, J. M. Skelton, J. M. Frost, M. W. Terban, H. Zhai, A. Alatas, J. S. Owen, A. Walsh and S. J. Billinge, *ACS Energy Lett.*, 2016, **1**, 880–887.
- R. X. Yang, J. M. Skelton, E. L. Da Silva, J. M. Frost and A. Walsh, *J. Phys. Chem. Lett.*, 2017, **8**, 4720–4726.
- C.-J. Yu, *J. Phys.: Energy*, 2019, **1**, 022001.
- N. A. Benedek and C. J. Fennie, *J. Phys. Chem. C*, 2013, **117**, 13339–13349.
- L. D. Whalley, J. M. Skelton, J. M. Frost and A. Walsh, *Phys. Rev. B*, 2016, **94**, 220301.
- J. Behler, *J. Chem. Phys.*, 2016, **145**, 170901.
- Y. Zuo, C. Chen, X. Li, Z. Deng, Y. Chen, J. Behler, G. Csányi, A. V. Shapeev, A. P. Thompson and M. A. Wood, *et al.*, *J. Phys. Chem. A*, 2020, **124**, 731–745.
- P. Whitfield, N. Herron, W. Guise, K. Page, Y. Cheng, I. Milas and M. Crawford, *Sci. Rep.*, 2016, **6**, 1–16.
- J. A. Flores-Livas, D. Tomerini, M. Amsler, A. Boziki, U. Rothlisberger and S. Goedecker, *Phys. Rev. Mater.*, 2018, **2**, 085201.
- M. Amsler and S. Goedecker, *J. Chem. Phys.*, 2010, **133**, 224104.
- S. Goedecker, *J. Chem. Phys.*, 2004, **120**, 9911–9917.
- J. Sun, A. Ruzsinszky and J. P. Perdew, *Phys. Rev. Lett.*, 2015, **115**, 036402.
- M. Bokdam and G. Kresse, 2022, personal communication.
- M. Bokdam, J. Lahnsteiner, B. Ramberger, T. Schäfer and G. Kresse, *Phys. Rev. Lett.*, 2017, **119**, 145501.
- W. Ke, I. Spanopoulos, C. C. Stoumpos and M. G. Kanatzidis, *Nat. Commun.*, 2018, **9**, 1–9.
- L. Gu, D. Zhang, M. Kam, Q. Zhang, S. Poddar, Y. Fu, X. Mo and Z. Fan, *Nanoscale*, 2018, **10**, 15164–15172.
- A. S. Thind, X. Huang, J. Sun and R. Mishra, *Chem. Mater.*, 2017, **29**, 6003–6011.
- T. Chen, B. J. Foley, C. Park, C. M. Brown, L. W. Harriger, J. Lee, J. Ruff, M. Yoon, J. J. Choi and S.-H. Lee, *Sci. Adv.*, 2016, **2**, e1601650.
- J. A. Finkler and S. Goedecker, *J. Chem. Phys.*, 2020, **152**, 164106.
- P. H. Hünenberger, *Adv. Comput. Simul.*, 2005, 105–149.
- W. K. Hastings, *Biometrika*, 1970, **57**, 97.
- G. M. Torrie and J. P. Valleau, *J. Comput. Phys.*, 1977, **23**, 187–199.
- L. Monacelli, R. Bianco, M. Cherubini, M. Calandra, I. Errea and F. Mauri, *J. Phys.: Condens. Matter*, 2021, **33**, 363001.
- A. Laio and M. Parrinello, *Proc. Natl. Acad. Sci. U. S. A.*, 2002, **99**, 12562–12566.
- B. A. Berg and T. Neuhaus, *Phys. Lett. B*, 1991, **267**, 249–253.
- F. Wang and D. P. Landau, *Phys. Rev. Lett.*, 2001, **86**, 2050.
- L. B. Pártay, G. Csányi and N. Bernstein, *Eur. Phys. J. B*, 2021, **94**, 1–18.
- V. A. Sharapov, D. Meluzzi and V. A. Mandelshtam, *Phys. Rev. Lett.*, 2007, **98**, 105701.
- A. Bruce, N. Wilding and G. Ackland, *Phys. Rev. Lett.*, 1997, **79**, 3002.
- A. Jackson, A. Bruce and G. Ackland, *Phys. Rev. E: Stat., Nonlinear, Soft Matter Phys.*, 2002, **65**, 036710.
- F. Noé, S. Olsson, J. Köhler and H. Wu, *Science*, 2019, **365**, eaaw1147.
- D. Frenkel and A. J. Ladd, *J. Chem. Phys.*, 1984, **81**, 3188–3193.
- I. Andricioaei, J. E. Straub and A. F. Voter, *J. Chem. Phys.*, 2001, **114**, 6994–7000.
- A. P. Dempster, N. M. Laird and D. B. Rubin, *J. R. Stat. Soc.: Ser. B (Methodol.)*, 1977, **39**, 1–22.
- R. H. Swendsen and J.-S. Wang, *Phys. Rev. Lett.*, 1986, **57**, 2607.
- D. J. Earl and M. W. Deem, *Phys. Chem. Chem. Phys.*, 2005, **7**, 3910–3916.



- 51 V. A. Sharapov and V. A. Mandelshtam, *J. Phys. Chem. A*, 2007, **111**, 10284–10291.
- 52 P. Nigra, D. L. Freeman and J. Doll, *J. Chem. Phys.*, 2005, **122**, 114113.
- 53 A. Togo and I. Tanaka, 2018, arXiv:1808.01590, DOI: [10.48550/arXiv.1808.01590](https://doi.org/10.48550/arXiv.1808.01590).
- 54 Y. Sugita, A. Kitao and Y. Okamoto, *J. Chem. Phys.*, 2000, **113**, 6042–6051.
- 55 H. Fukunishi, O. Watanabe and S. Takada, *J. Chem. Phys.*, 2002, **116**, 9058–9067.
- 56 R. M. Neal *et al.*, *Handbook of Markov Chain Monte Carlo*, 2011, vol. 2, p. 2.
- 57 S. Duane, A. D. Kennedy, B. J. Pendleton and D. Roweth, *Phys. Lett. B*, 1987, **195**, 216–222.
- 58 J. Lahnsteiner, G. Kresse, J. Heinen and M. Bokdam, *Phys. Rev. Mater.*, 2018, **2**, 073604.
- 59 J. Behler and M. Parrinello, *Phys. Rev. Lett.*, 2007, **98**, 146401.
- 60 G. Kresse and J. Furthmüller, *Comput. Mater. Sci.*, 1996, **6**, 15–50.
- 61 G. Kresse and J. Hafner, *Phys. Rev. B: Condens. Matter Mater. Phys.*, 1993, **47**, 558.
- 62 G. Kresse and J. Furthmüller, *Phys. Rev. B: Condens. Matter Mater. Phys.*, 1996, **54**, 11169.
- 63 G. Kresse and J. Hafner, *J. Phys.: Condens. Matter*, 1994, **6**, 8245.
- 64 G. Kresse and D. Joubert, *Phys. Rev. B: Condens. Matter Mater. Phys.*, 1999, **59**, 1758.
- 65 H.-A. Chen and C.-W. Pao, *ACS Omega*, 2019, **4**, 10950–10959.
- 66 R. Jinnouchi, J. Lahnsteiner, F. Karsai, G. Kresse and M. Bokdam, *Phys. Rev. Lett.*, 2019, **122**, 225701.
- 67 J. Behler, *RuNNer—A program for constructing high-dimensional neural network potentials*, Universität Göttingen, 2020.
- 68 J. Behler, *Int. J. Quantum Chem.*, 2015, **115**, 1032–1050.
- 69 J. A. Finkler, High-Dimensional-Neural-Network-Potential, 2022, <https://github.com/Jonas-Finkler/High-Dimensional-Neural-Network-Potential>.
- 70 A. Singraber, J. Behler and C. Dellago, *J. Chem. Theory Comput.*, 2019, **15**, 1827–1840.
- 71 J. Behler, *J. Chem. Phys.*, 2011, **134**, 074106.
- 72 C. Handley and C. Freeman, *Phys. Chem. Chem. Phys.*, 2017, **19**, 2313–2321.
- 73 J. A. Finkler, MaPbI3-HDNNP, 2022, <https://github.com/Jonas-Finkler/MaPbI3-HDNNP>.
- 74 A. P. Thompson, H. M. Aktulga, R. Berger, D. S. Bolintineanu, W. M. Brown, P. S. Crozier, P. J. in't Veld, A. Kohlmeyer, S. G. Moore and T. D. Nguyen, *et al.*, *Comput. Phys. Commun.*, 2022, **271**, 108171.
- 75 A. Togo and I. Tanaka, *Scr. Mater.*, 2015, **108**, 1–5.
- 76 A. Marronnier, H. Lee, B. Geffroy, J. Even, Y. Bonnassieux and G. Roma, *J. Phys. Chem. Lett.*, 2017, **8**, 2659–2665.
- 77 M. Gubler, M. Krummenacher, H. Huber and S. Goedecker, 2022, arXiv:2206.07339, DOI: [10.48550/arXiv.2206.07339](https://doi.org/10.48550/arXiv.2206.07339).
- 78 E. L. Da Silva, J. M. Skelton, S. C. Parker and A. Walsh, *Phys. Rev. B: Condens. Matter Mater. Phys.*, 2015, **91**, 144107.
- 79 S. Taraskin and S. Elliott, *Phys. Rev. B: Condens. Matter Mater. Phys.*, 1999, **59**, 8572.
- 80 M. K. Gupta, J. Ding, D. Bansal, D. L. Abernathy, G. Ehlers, N. C. Osti, W. G. Zeier and O. Delaire, *Adv. Energy Mater.*, 2022, 2200596.

