

Late Pleistocene montane forest fire return interval estimates from Mount Kenya

COLIN J. COURTNEY MUSTAPHI,^{1*}  STEPHEN M. RUCINA² and ROB MARCHANT³

¹Geoecology, Department of Environmental Sciences, University of Basel, Basel, Switzerland

²Department of Earth Sciences, Palynology and Palaeobotany Section, National Museums of Kenya, PO Box 40658, Nairobi, Kenya

³York Institute for Tropical Ecosystems, Department of Environment and Geography, University of York, Heslington, York, North Yorkshire, UK

Received 25 April 2022; Revised 19 July 2022; Accepted 25 July 2022

ABSTRACT: Past forest fire events and fire frequencies are reconstructed with sediment–charcoal records at lake catchment spatial scales. Few quantitative palaeofire analyses exist in tropical montane forests, where fire return intervals are long (decadal and centennial scales) because of the infrequency of fire weather and fuel conditions. Fire return intervals are a key characteristic of fire regimes and changing fire frequencies rapidly alter land cover compositions and vegetation structure. Charcoal records from small lakes with relatively small catchments covered with dense forest provide an opportunity to reconstruct low-frequency, high-severity fires through a time series decomposition approach to identify charcoal peaks above a varying background rate as a proxy for palaeofire events. The sediment core from Rumuiku wetland on Mount Kenya, equatorial eastern Africa, accumulated a nearly linear age–depth model and provided a high temporal resolution (10 years cm⁻¹) sieved charcoal count record (>125 µm). Pollen analysis showed a significant change in montane forest assemblage occurred at 21 200 cal a BP from a montane forest with abundant *Podocarpus* and *Juniperus* to a forest with more abundant *Hagenia*. This change in forest altered the vegetation composition and structure with concomitant changes to the fire regime. Forest biomass in the *Hagenia* forests decreased and it is likely that fire activity qualitatively changed toward lower intensity and lower severity fires. The quantitative fire event reconstruction focuses on the interval from 27 000 to 16 500 cal a BP and the older montane forest that experienced higher severity fires from 27 000 to 21 200 cal a BP, which reconstructed a temporally heterogeneous fire regime with fire return intervals that ranged from 30–430 years and a mean of 120 years (median 160 years) in the catchment. These are the first estimates of fire return intervals of mountain forests in eastern Africa. We then explore the potential for further comparative research and incremental research contributions to improve quantitative and qualitative palaeofire research in tropical forest ecosystems. We discuss the potential to use these types of data for characterizing variables of fire regimes prior to ostensibly significant modification by anthropogenic activity as well as during the recent past as human land use pressures increased within Afromontane forests. © 2022 The Authors *Journal of Quaternary Science* Published by John Wiley & Sons Ltd.

KEYWORDS: Africa; Afromontane; charcoal; fire frequency; fire regime; mountains

Introduction

Tropical montane forests are important as global hotspots for biodiversity conservation that underpin agricultural livelihoods and a wide spectrum of ecosystem services for both mountain and downstream communities (McClanahan *et al.*, 1996; Bussmann, 1999; UNEP, 2012). Fires in the mountain forests of eastern Africa are commonly featured in the international news media (Henry *et al.*, 2019a; BBC News, 2020; Hemp, 2020) and are driven by human activities, land use changes and meteorological variability. In recent centuries and decades the anthropogenic pressures on montane forest resources and land cover conversions have increased in eastern Africa (Hobley, 1914; Troup, 1932; Ndegwa Gichuki, 1999; Petursson *et al.*, 2013; Heckmann *et al.*, 2014; Finch *et al.*, 2017; Githumbi *et al.*, 2021). For example, the forests of Mount Kenya have been extensively converted to tea and coffee agriculture and agroforestry (Routledge and Routledge, 1910; Bussmann, 1996; Gathara, 1999;

Mugo, 2007; Kleinschroth *et al.*, 2013). The disturbance ecology of ostensibly pre-anthropogenically modified montane forests is important for understanding the vegetation responses to fire and a comparator for current and future forest management (Mahaney, 1986; Bussmann and Beck, 1998; Kindt *et al.*, 2007; Omoro *et al.*, 2010, 2011).

Several palaeoenvironmental studies of palustrine and lacustrine sediment cores collected on Mount Kenya and neighbouring mountains have described the late Quaternary and Holocene vegetation assemblage variability of lower montane forests (Ficken *et al.*, 1998; Olago *et al.*, 1999, 2003), mid-montane forests (Coetzee, 1964, 1967; Cooremans and Mahaney, 1990; Ficken *et al.*, 2002; Wooller *et al.*, 2003; Rucina *et al.*, 2009) and Afroalpine elevations (Hamilton, 1982; Perrott, 1982; Barker *et al.*, 2001; Courtney Mustaphi *et al.*, 2017, 2021a). Despite available studies of long-term dynamics of Afromontane ecosystems, quantitative estimates of past variability for fire return intervals (Landres *et al.*, 1999) in the different moist montane forest ecosystems of eastern Africa are unknown. Forest management plans for ecosystems with decadal- to centennial-scale patterns of fires benefit from a long-term perspective (Marchant *et al.*, 2018;

*Correspondence: Colin Courtney Mustaphi, as above.
Email: colin.courtney-mustaphi@unibas.ch

Manzano *et al.*, 2020; Marchant, 2021). Management plans in the moist montane forests do not incorporate quantitative estimates of return intervals as there are no detailed analyses of forest disturbance over long time scales beyond the latter past century on Mount Kenya (FAO, 2012; Henry *et al.*, 2019b). Because of the quantitative knowledge gap, fire management plans have tended to focus on ecosystems with observable and measurable fire return intervals (Hempson *et al.*, 2017) and on fire protection in agroforestry and agricultural areas (Phillips, 1965; Wesche *et al.*, 2000; Sang, 2001). Palaeoenvironmental research contributes to our understanding of fire in modern ecosystems (Seddon *et al.*, 2014; Armstrong *et al.*, 2017; McLauchlan *et al.*, 2020) to provide information about disturbance dynamics under different climate conditions and levels of anthropogenic modifications (Keane *et al.*, 2009; Bowman *et al.*, 2011; Archibald *et al.*, 2012).

Fires in dense forests can produce large quantities of burned biomass and a large influx of charcoal occurs during the post-fire years that may be detected as charcoal accumulation peaks in sediment–charcoal records (Whitlock and Millspaugh, 1996; Larsen and Whitlock, 2001; Courtney Mustaphi *et al.*, 2015). The purpose of this study was to reanalyse palaeoenvironmental data from the Rumuiku wetland sediment core to reconstruct estimates of fire frequency in a mid-montane forest of Mount Kenya, Meru County, Kenya, eastern Africa. The sieved sediment charcoal time series (Courtney Mustaphi *et al.*, 2021b) was reanalysed to estimate charcoal accumulation rate time series peaks that represent fire episodes in the geological record (Long *et al.*, 1998; Gavin *et al.*, 2006; Higuera *et al.*, 2009, 2010, 2011a; Blarquez *et al.*, 2013) and was then integrated with previously published pollen data from the same sediment core (Rucina *et al.*, 2009; Courtney Mustaphi *et al.*, 2021b). The lowermost section of the Rumuiku record was dominated by *Podocarpus* pollen and the charcoal was deposited under lacustrine conditions, from 27 000 to 21 200 cal a BP, and produced a charcoal signal with a relatively high mean value and relatively high peaks above the

varying background accumulation rate used for peak analysis. Here we report on the sample selection, analysis and interpretation of the charcoal time series analysis to estimate fire return intervals.

Study area

The Rumuiku stream is part of the Tana River watershed that originates within a small Cyperaceae and Poaceae vegetation-covered wetland in an extinct volcanic crater near the eastern edge of the Mount Kenya National Park and Forest Reserve boundary at 2160 m asl (geographical coordinates: $-0.118583, 37.5611$; Fig. 1 and Supporting Information Fig. S1). The lacustrine and palustrine sediment stratigraphy of the wetland provided an environmental record of the past 27 000 years to the present (Rucina *et al.*, 2009). The elliptical crater is $\sim 350 \times 200$ m across and the crater wall is asymmetric with steeper walls on the south and west (Fig. 1; Fig. S1). The surrounding mid-montane forest is currently composed of *Croton macrostachyus*, *Macaranga kilimandscharica*, *Neoboutonia macrostachyus*, *Podocarpus*, *Polyscias* spp., *Schefflera* spp. and *Tabernaemontana holstii* and others (Rucina *et al.*, 2009). At higher elevation the forests transition to *Juniperus*-dominated forests, then *Podocarpus*-dominated forests, with considerable spatial variability and patchiness in forest stands and compositions (Wimbush, 1937; Coe, 1967; Bussmann, 2001, 2006). A narrow *Hagenia* forest zone exists at the upper montane forests on the western side of the mountain and is much wider along the southern flank (Bussmann and Beck, 1995) (Fig. 1).

Holocene and Pleistocene forest extents were much larger (Hamilton, 1982; van Zinderen Bakker and Coetzee, 1988) and allowed for more genetic connectivity among highland vegetation (Hamilton and Taylor, 1991; Jump *et al.*, 2014; Hemp and Hemp, 2018). Montane forest extents have been reduced during, at least, the past millennium (Finch *et al.*, 2017) and further reduced during the past century (Hutchinson, 1907; Cranworth, 1912; Hobley, 1914; Troup, 1932; Castro, 1991a)

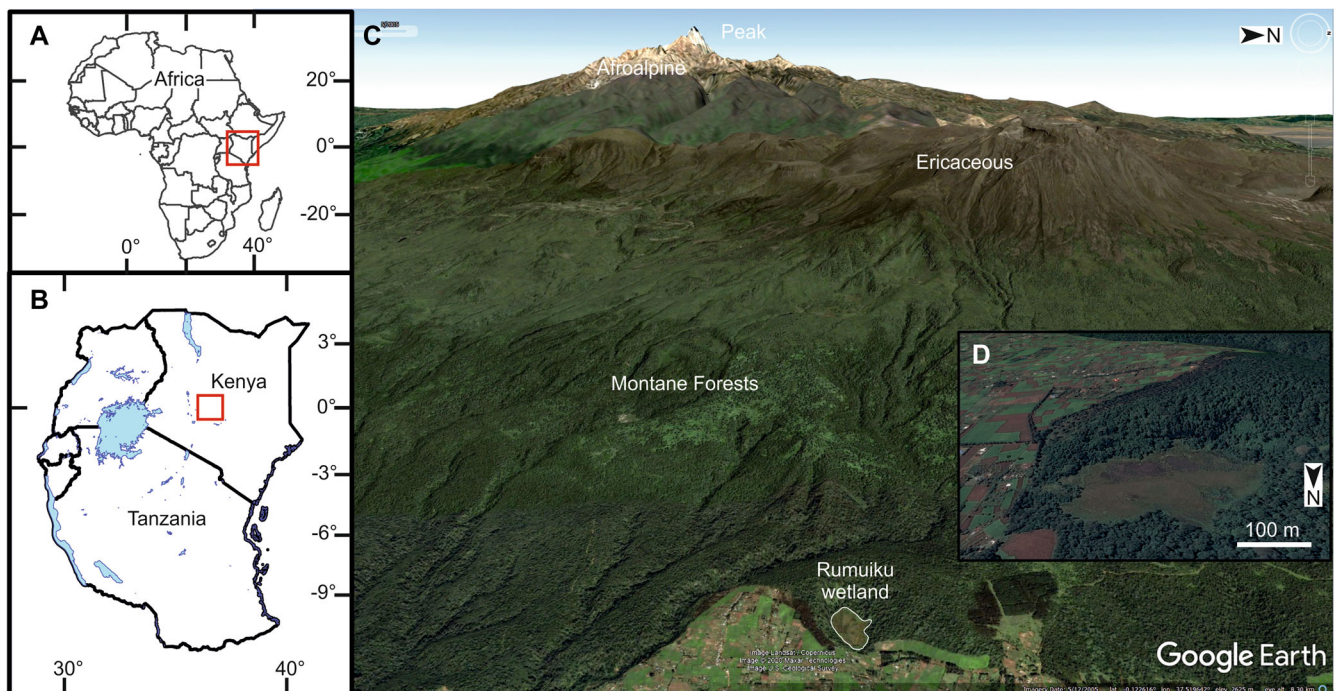


Figure 1. The Rumuiku wetland study site location inset maps of (A) Africa and (B) in central Kenya. (C) An oblique perspective of the eastern flank of Mount Kenya from the edge of Mount Kenya National Park and forest reserve to Batian peak (5199 m asl) with generalized vegetation biomes (Hedberg, 1951; Hedberg, 1955; Bussmann, 2002) and (D) a southward-facing view of the Rumuiku volcanic crater wetland ($-0.118583, 37.5611$; 2160 m asl; 8.9 ha; Rucina *et al.*, 2009). Image date 9 February 2020 from Google Earth Pro version 7.3.3.7699 (64-bit) with 2.0x vertical exaggeration to show topographic relief (Google Earth/DigitalGlobe, 2021).

and recent decades (Castro, 1991b; Fanstone, 2016), but with some stable forestlines and reforestation areas (Gathaara, 1999; Hansen *et al.*, 2013; Eckert *et al.*, 2017). At present on Mount Kenya, fires occur most frequently in the Ericaceous vegetation, along trail routes, along protected area boundaries and on the drier leeward northwestern flank (Fig. 2) (Vacik *et al.*, 2018; Henry *et al.*, 2019b). In the relatively more fire-prone northwestern area of the mountain, most observed fires since 1980 occurred during February–March and a secondary mode during August–September (Poletti *et al.*, 2019). Montane vegetation has the potential to burn at any time of the year if the fire weather conditions occur (Wesche, 2003) and small-scale fires ignited by people occur even under moist conditions. Fire ignitions occur naturally, commonly by cloud-to-ground lightning, and purposefully or accidentally by people using forest resources (KFS, 2010; Nyongesa and Vacik, 2018; Nyongesa and Vacik, 2019). Fires in Mount Kenya National Park and Forest

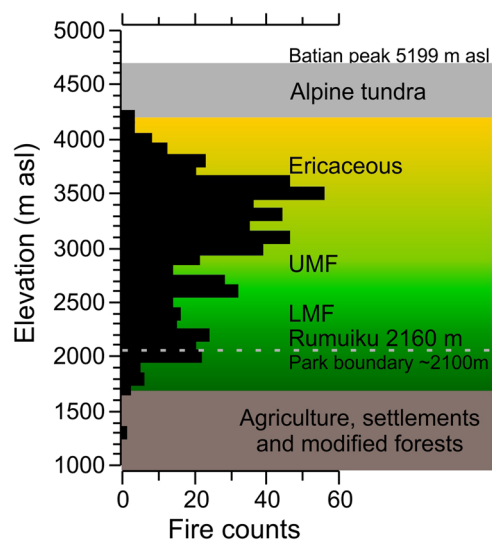


Figure 2. The total number of observed fire events from 2001 to 2013 on Mount Kenya binned by 100-m elevation bands. Fires with >50% detection confidence from the satellite-based Earth observation MODIS active fire product MCS14ML (years: 2001–2013) around the entire mountain (also see Henry *et al.*, 2019). Generalized vegetation on the eastern flank of Mount Kenya are shown in horizontal bands: brown, agriculture; greens, montane forests; yellow, ericaceous; grey, Afroalpine and tundra (Hedberg, 1951; Hedberg, 1954; Coe, 1967; Zhou *et al.*, 2018). Note the boundary for Mount Kenya National Park and the forest reserve varies in elevation around the mountain from ~1500 to 2200 m asl.

Reserve together make the area one of the most frequently burned protected areas of Kenya, as observed by satellite products from 2003–2014 (Karanja, 2016). The long-term fire and disturbance ecologies of the different montane forest types have yet to be fully characterized across the highlands of eastern Africa. Changing fire frequencies on mountains of eastern Africa are key processes that influence vegetation composition and structure (Wesche, 2003) with many effects on patchiness and ecotonal transitions (Hemp and Beck, 2001; Hemp, 2005; Gil-Romera *et al.*, 2019; Courtney Mustaphi *et al.*, 2021a). It is unknown what disturbance ecology processes promote the persistence or hindrance of the spatial and temporal patterns of tree stand compositions over multidecadal, centennial and millennial time scales, and how these processes interact with other ecological processes. Stand-replacing fires have been proposed as a disturbance ecology mechanism to explain the spatial vegetation patterns in highland forests across eastern Africa (Wimbush, 1937; Lange *et al.*, 1997; Wesche, 2000), yet there are few datasets available for analysis.

Material and methods

Sampling and previously published data

A 1469-cm-long sediment stratigraphy was collected in 2005 from the Rumuiku crater wetland surface with a Russian peat corer (Jowsey, 1966) from parallel boreholes by overlapping 50 cm long, 5 cm diameter hemicylindrical cores. Nine accelerator mass spectrometry (AMS) radiocarbon dates provided a 27 000-year chronology to the present (–55 cal a BP; Table 1; Rucina *et al.*, 2009; Rucina, 2011) and we reused the radiocarbon calibrations (IntCal13, Reimer *et al.*, 2013; Table 1; Fig. 3) and age–depth model presented in Courtney Mustaphi *et al.* (2021b). Select pollen taxa have been presented in this study from the previously published pollen relative abundance data and pollen zones from the same sediment core (Rucina *et al.*, 2009; Sánchez Goñi *et al.*, 2017). Charcoal analysis used continuous 1-cm-thick subsamples ($n = 969$) of 0.5–3 cm³ wet sediment that were immersed for >24 h in a sodium metaphosphate solution and manually wet sieved through a 125- μ m mesh (Bamber, 1982). The retained material was visually inspected with a metal probing pick under a Zeiss Stemi 2000-C optical stereomicroscope at 10–40 \times magnification and the charcoal pieces were diagnostically identified and counted (Whitlock and Larsen, 2001; Hawthorne *et al.*, 2018).

Table 1. Age determinations for the Rumuiku wetland sediment core collected in 2005 (–55 cal a BP) (Rucina *et al.*, 2009; Rucina, 2011). BP, before present, 1950 CE. Analytical radiocarbon dating error values are not rounded (*sensu* Stuiver and Polach, 1977) and presented as reported from the laboratories (SUERC, Scottish Universities Environmental Research Centre Radiocarbon laboratory, University of Glasgow, UK; Wk, Waikato Radiocarbon Dating Laboratory, University of Waikato, New Zealand). The lowermost radiocarbon date (SUERC-17200) was rejected from the age–depth model (Rucina *et al.*, 2009). NA, not applicable.

Depth (cm)	Age (¹⁴ C a BP)	1 σ error (\pm a BP)	δ^{13} C (‰)	Material	Laboratory code or description
0	–55	0	NA	Top of core	Surface of sediments
100	2252	30	–10.7	Bulk sediment	SUERC-22553
245	7763	40	–21.8	Bulk sediment	SUERC-17195
400	13 325	75	–23.1	Bulk sediment	SUERC-22554
545	13 953	59	–24.5	Bulk sediment	SUERC-17196
745	15 759	71	–29.8	Bulk sediment	SUERC-17197
945	17 296	85	–29.6	Bulk sediment	SUERC-17198
1145	19 578	111	–31.5	Bulk sediment	SUERC-17199
1400	22 016	180	–29.7	Bulk sediment	WK-18792
1465	19 006	112	–30.0	Bulk sediment	SUERC-17200
1469					Base of sediments

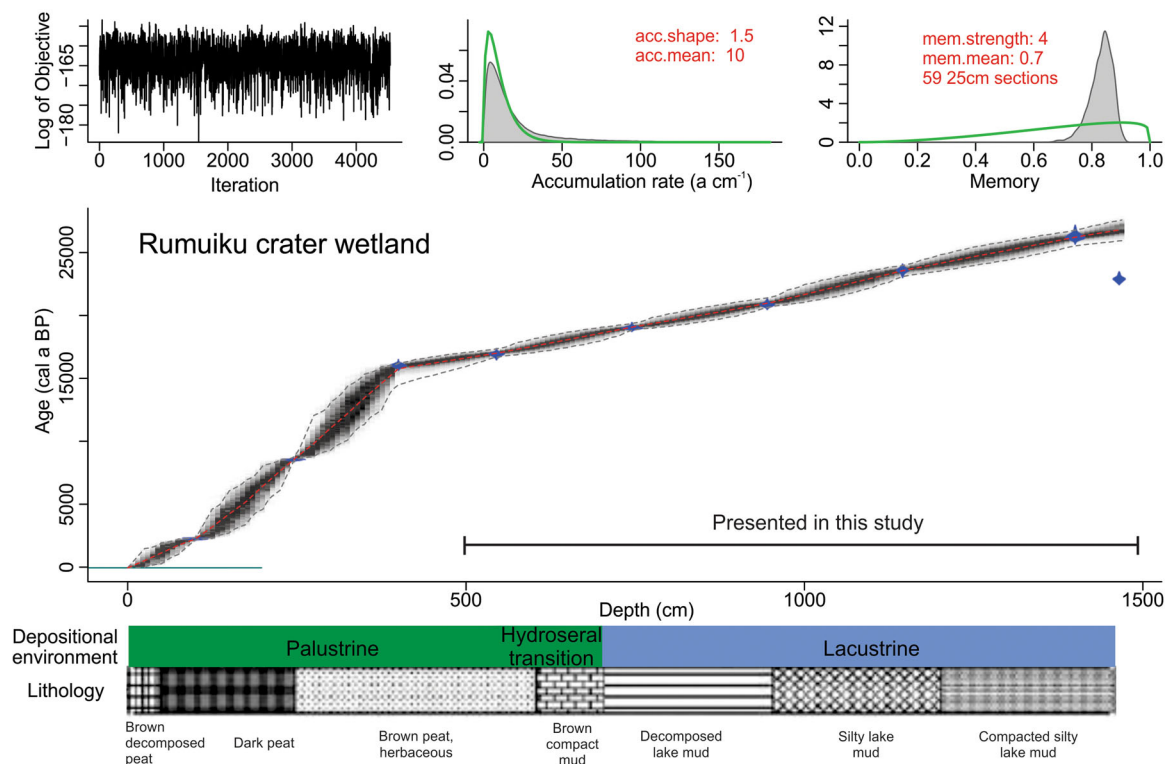


Figure 3. An age–depth model produced with the R package Bacon version 2.2 (Blaauw and Christen, 2011a, 2011b; R Development Core Team, 2015) that used nine AMS radiocarbon dates (Rucina *et al.*, 2009) and the IntCal13 radiocarbon curve (Reimer *et al.*, 2013) and parameterized as shown in red text. Blue symbols represent the calibrated radiocarbon date probability distributions, the grey shaded areas represent the probability densities of the Markov chain Monte Carlo (MCMC) iterative random walks through the age probability distributions, and the dashed lines show the 95% confidence intervals. The dashed red line shows the weighted mean of all iterations (age–depth model applied to the charcoal and palaeoenvironmental data). The lowermost radiocarbon date (SUERC-17200) was objectively rejected from the age–depth model and was rejected in the original study (Rucina *et al.*, 2009). Core lithology with sediment types and legend (Troels-Smith, 1955) and hydroseral interpretation shown horizontally below the x-axis (Rucina *et al.*, 2009).

The weighted mean age–depth model results (Blaauw and Christen, 2011a) were applied to the palaeoenvironmental data and charcoal concentrations (pieces cm^{-3} of wet sediment) were resampled to a median temporal sampling interval of 10 years (mean = 10.6, median = 10.3, range 7.8–14 a cm^{-1}) to create an even interval time series and converted to charcoal accumulation rates (CHAR; pieces $\text{cm}^{-2} \text{a}^{-1}$) (Courtney Mustaphi *et al.*, 2021b). CHAR was analysed using the CharAnalysis Matlab script as implemented through an ensemble-member strategy for decomposing the charcoal series to identify charcoal peaks (Higuera *et al.*, 2009, 2010) that represent robust fire events, RFEs (Blarquez *et al.*, 2013), above the variable background CHAR (Gavin *et al.*, 2006). RFEs were determined and supported through consensus between the ensemble member iterations of multiple smoothing window lengths and smoothing techniques (LOWESS smoother, LOWESS smoother robust to outliers, moving average, moving median and moving mode) (Blarquez *et al.*, 2013). Smoothing window durations of 100–1500 years at 50-year increments were implemented for each of the five smoothing techniques creating a total of 470 runs for each of the five smoothing techniques. Fire return intervals (FRIs) were obtained from each member and fire frequencies were calculated from the identified fire dates within each member using a kernel density function. The final RFEs were obtained from the ensemble of fire events through consensus, defined as the 75th percentile of the distribution as a threshold for the minimum number of members identifying the same peak (minimum agreeing iterations cutoff $n = 463$). The times between the detected charcoal peaks were used as estimates of FRIs. The signal-to-noise ratio of the CHAR time series was also calculated for all iterations (Higuera *et al.*, 2009; Blarquez

et al., 2013). For visualization on graphics, a minimum threshold value of 3.0 was applied for data interpretation of the CHAR time series that used the LOWESS smoother with a 750-year window duration and implemented in CharAnalysis (Higuera *et al.*, 2009; Kelly *et al.*, 2011).

First, we analysed the charcoal time series available from 27 000 to 16 500 cal a BP (1500–500 cm). We then focus on the section from 27 000 to 21 200 cal a BP that spanned Rumuiku pollen zones I and II with *Podocarpus*-dominated mid-montane forests. We argue that the results from this section are the most representative because of the taphonomic effects of the palaeolake shallowing and hydroseral succession to a wetland and potentially the very different fire regime under the *Hagenia*-dominated pollen zones (RUM III and IV, 21 200–16 500 cal a BP) that led to a charcoal signal with a lower mean charcoal accumulation rate and much smaller peaks. We present the distribution of FRI results for the two palaeofire regimes of the *Podocarpus*-dominated mid-montane forests (27 000–21 200 cal a BP) and the *Hagenia*-dominated zones (21 200–16 500 cal a BP), as well as the entire duration of 27 000–16 500 cal a BP.

Results

The Rumuiku wetland sediment record presents a high temporal resolution and relatively stable depositional environment with a near-linear pattern of sediment accumulation rates from 27 000 to 16 500 cal a BP (1469–500 cm depth; Fig. 3 and Table 1). The Rumuiku crater lake then accumulated organic-rich deposits through a hydroseral succession to a wetland (palustrine sediments) characterized by increased relative

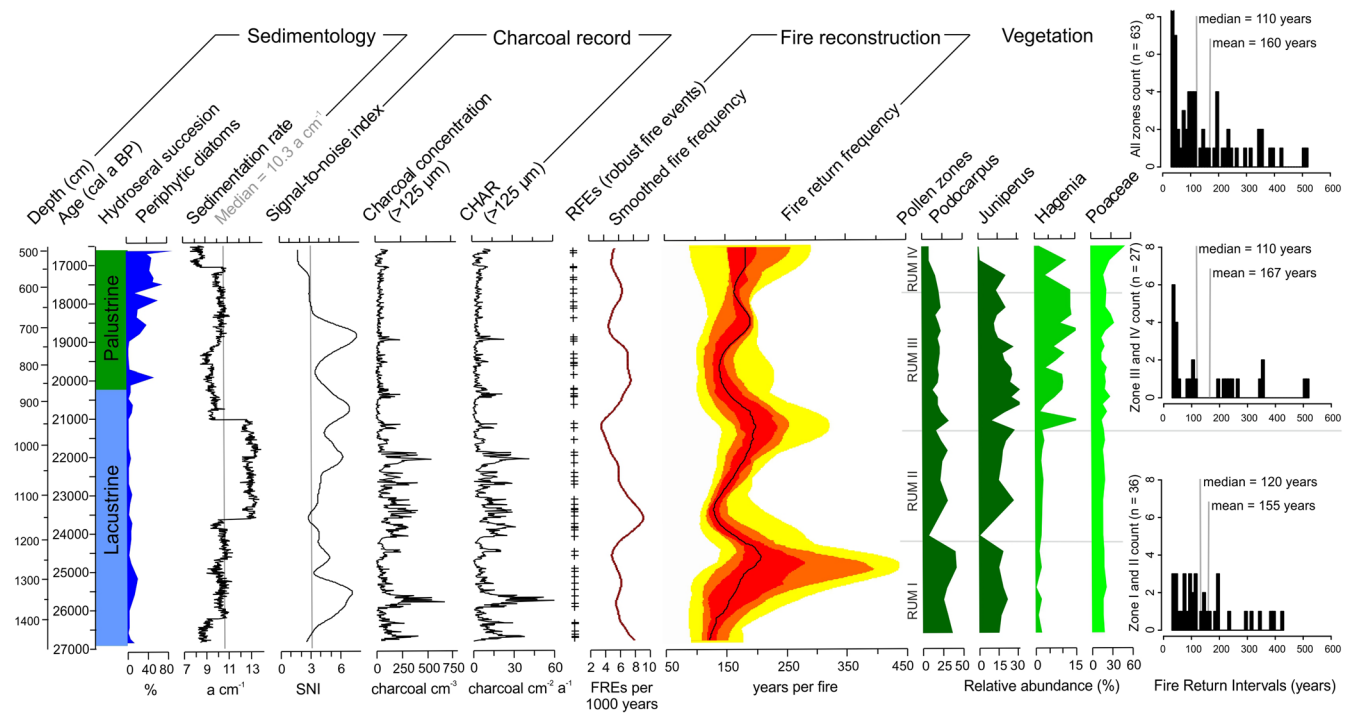


Figure 4. The hydroseral succession of the palaeolake Rumuiku to wetland conditions in the crater are summarized at left based on diatom assemblages, aquatic invertebrate remains, aquatic pollen types and lithology data (Rucina *et al.*, 2009; Courtney Mustaphi, 2021b). The charcoal accumulation rate (CHAR) record of the Rumuiku sediment core and the portion analysed for peak detection to reconstruct fire events ('+' symbols) and fire frequency (brown curve). Signal-to-noise index values are shown (black curve at left with >3.0 cut-off detection (grey line; Kelly *et al.*, 2011)). Range of fire return frequencies (yellow envelope), 10th percentiles (orange), 25–75th percentiles (red) and the median (black line) estimated by the ensemble RFE approach. The calculated fire return intervals (FRIs) that used the robust fire events reconstructed from the sediment charcoal record of the entire record (at right, top) and for each pollen taxon-dominated assemblage zones (at right).

abundances of epiphytic diatom taxa (Courtney Mustaphi *et al.*, 2021b) and more rapid sedimentation rates (Rucina *et al.*, 2009). The hydroseral transition occurs just after the significant transition from pollen zone II to III, from *Podocarpus*-dominance to *Hagenia* forests (Fig. 4). Sedimentation rates ranged from 7.8 to 14.0 years cm^{-1} throughout the record analysed with a median rate of 10.3 years cm^{-1} (mean = 10.6 years cm^{-1}) (Fig. 4 at left). Charcoal concentration values averaged 82 pieces cm^{-3} throughout the record, with lower magnitudes following the forest transition. The analysis presented here is focused on the two fire regime zones based on the charcoal record between the *Podocarpus*-dominated pollen zone and forest type section from 27 000 to 21,200 cal a BP (Rumuiku pollen zones I and II) and the *Hagenia*-dominated zone (after 21 200 cal a BP, pollen zones III and IV) based on the pollen zonation and amplitude differences of peaks and varying background rates observed in the charcoal record.

The record was divided at 21 200 cal a BP by pollen zones and charcoal with a pollen assemblage change from *Podocarpus*- to *Hagenia*-dominated, lower mean charcoal and lower charcoal peak amplitudes, and the onset of hydroseral succession from lake to wetland. Even with no significant change in sedimentation rates after 21 200 cal a BP (Fig. 4), the charcoal record has a nearly stepwise decrease in mean and variance amplitudes that are concomitant with the abrupt and persistent increased *Hagenia* pollen abundances that suggested a changed forest type in the catchment (Rucina *et al.*, 2009). We explored peak analysis (RFEs) that used both the entire charcoal record of 1469–500 cm (27 000–16 500 cal a BP; Supporting Information Figs S2–S5) and then focus on two subset records divided at 21 200 cal a BP. The apparent stepwise change in CHAR cannot be disentangled from the influence of taphonomy or vegetation and fire ecology

changes, and the techniques used should be robust to significant ecosystem changes (Blarquez *et al.*, 2013).

A total of 64 RFEs were estimated for the entire record analysed (27 000–16 500 cal a BP) that produced 63 FRI estimates (Fig. 4, top right) with a median FRI of 110 years (mean = 160 years). The *Podocarpus*-dominated zone had a median FRI of 120 years (mean = 155 years) and the *Hagenia*-dominated zone had a median FRI of 110 (mean = 167 years). We did not fit a model distribution to the FRI distribution and instead we present the arithmetic descriptive statistics because there is no evidence for whether the performance of Weibull or negative exponential distributions (or another distribution) are appropriate models of the FRIs of Afromontane forests (compare with other forest types: Johnson and Wagner, 1985; Moritz *et al.*, 2009). The FRI distributions for the *Podocarpus*- and *Hagenia*-dominated zones are both right-skewed but are different (Fig. 4 at right). The smoothed fire frequency suggests there were 4–8 fires per 1000 years, with the highest frequency centred at 23 500 cal a BP (Fig. 4).

The palaeofire reconstruction approach of RFEs was applied to the older sediments that have the properties of a stable sediment accumulation rate of ~10 years per sample (contiguous 1-cm intervals), stable montane forest assemblage (pollen zones I and II; Rucina *et al.*, 2009), and relatively high charcoal concentrations and accumulation rates (range of 3–672 pieces cm^{-3} , mean = 120, standard deviation = 102 pieces cm^{-3} , $n = 504$ of the 969 samples analysed for charcoal content) (Fig. 4). The calculated signal-to-noise index (SNI) values for this section were generally >3.0, with the exceptions of when SNI reached 2.8 during 23 710–23 460 cal a BP ($n = 26$ samples, 5.2% of the analysed record) and an edge effect at the very beginning of the time series (Fig. 4), which supported that the signal was appropriate for a time series peak component analysis for the duration of pollen zones I and II

(Kelly *et al.*, 2011). SNI values are moderate (>3.0) because of the relatively high-amplitude peaks and standard deviation of the charcoal record in the older section of the core, under the catchment charcoal transport and preservation of palaeolake Rumuiku conditions. To our knowledge, this is the first record used for a quantitative palaeofire reconstruction in Africa and that closely fits the assumptions developed for the CHAR peak analysis approach (Higuera *et al.*, 2009; Blarquez *et al.*, 2013; Crawford and Vachula, 2019).

Discussion

Palaeofire reconstruction and uncertainties

The vegetation record of Rumuiku has a major compositional change at 21 200 cal a BP from pollen zone II to III (Fig. 4) and this change to *Hagenia*-dominated vegetation cover probably produced changes in total forest biomass within the catchment, different fire–vegetation interactions and potentially different charcoal taphonomic processes (Whitlock *et al.*, 1997; Marlon *et al.*, 2006; Courtney Mustaphi *et al.*, 2015). The FRIs reconstructed from the Rumuiku crater palaeolake sediments from 27 000 to 21 200 cal a BP (Fig. 4) show a temporally heterogeneous distribution with short multidecadal return intervals (<100 years), intermediate duration return intervals (100–200 years) and longer return intervals (200 to a maximum of 490 years) (Fig. 4). The temporal heterogeneity of FRIs (Johnson and Gutsell, 1994) reconstructed at Rumuiku suggest that FRI variability is one of the disturbance ecology mechanisms that contribute to the patchy mosaic of montane forest subtype associations and stand structures around Mount Kenya. Multidecadal-scale burning evident in agroforestry stands in northwestern Mount Kenya produced estimates of fire rotation durations of 87–92 years (Poletti *et al.*, 2019). Northwestern Mount Kenya, which included some patches of indigenous forests, has a drier hydroclimate, is highly modified by human land uses and the total area is significantly larger than the Rumuiku wetland catchment. At present, there are few additional sources of palaeoenvironmental evidence to compare with these results. It is difficult to assess whether the shorter FRIs (<100 years) could be related to secondary peaks caused by continued erosion of post-fire surface soil charcoal on the Rumuiku catchment or if the peaks are true relatively rapid reburns. The variability in fire weather, the vegetation regrowth patch conditions and ecohydrological feedbacks could promote drier conditions and thus increased flammability as the forest stands regenerated. To date, there are no publications that provide support for these mechanisms or occurrences. Reconstructed mean annual temperatures at neighbouring Sacred Lake on the mountain (2350 m asl) varied between 13 and 17 °C from 27 000 to 21,200 cal a BP (Loomis *et al.*, 2017), but a quantitative reconstruction of local hydroclimate has not been developed. Qualitative evidence from the Rumuiku record derived from the aquatic plant pollen, diatom and presence data of aquatic invertebrates (*Daphnia* ephippia, Bryozoa statoblasts, oribatid mites) suggest a hydros-eral succession from shallow lake to wetland well after 21 500 cal a BP (Courtney Mustaphi *et al.*, 2021b); but the sampling resolution for the pollen data limited further precision for interpretation of the pattern of change at.

At present, there are no additional proxy data or available palaeofire techniques to independently corroborate the peak analysis and the estimates potentially underestimate past FRIs (Finsinger *et al.*, 2014). Observations (Pisaric, 2002) and charcoal source area and transport studies (Woodward and Haines, 2020; Vachula, 2021) from temperate ecosystems

have shown the spatial fidelity of charcoal records is influenced by fires from beyond the watershed (Lynch *et al.*, 2004; Adolf *et al.*, 2018; Vachula *et al.*, 2018; Hennebelle *et al.*, 2020), with implications for the interpretation of sediment–charcoal data (Ohlson and Tryterud, 2000; Tinner *et al.*, 2006; Leys *et al.*, 2015, 2017). Indeed, single fragments of grass charcoal from burned savannas have been observed to be transported 10 km across relatively flat areas during the evening by the authors. The contribution of long-distance transport of charcoal to background charcoal accumulation rates on mountain areas has yet to be assessed (Courtney Mustaphi *et al.*, 2021a, 2022). Future studies should incorporate quantification of charcoal transport and deposition in tropical mountain areas, similar to approaches for pollen (Schüler, 2012; Ssemmanda *et al.*, 2014; Schüler and Hemp, 2016) and charcoal in temperate ecosystems (Adolf *et al.*, 2018). The fire weather and convection patterns for lofting charcoal particles into the atmosphere have not been explored and remain an emerging study area for tropical mountains and lowland source areas of charcoal (Courtney Mustaphi *et al.*, 2022).

Although *Juniperus*, *Podocarpus* and *Hagenia* co-occur under similar climate conditions and recruit in monospecific stands following fire, *Hagenia* germination rates are highest in bare soils following ecological disturbances that open surfaces and canopy, and as the forest develops, *Hagenia* stands maintain a less dense canopy (Bussmann, 2001). These mid-elevation montane forest types occupy similar temperature–moisture climatic conditions on Mount Kenya (Niemelä and Pellikka, 2004; Zhou *et al.*, 2018) and variability in FRIs may contribute to the interspecific competition of the dominant tree taxa and promote the spatial heterogeneity of forest stands (Fig. 5; and see supplementary information in Courtney Mustaphi *et al.*, 2021b). The fire ecology of the moist forests of Mount Kenya has not been fully documented, including information on fire weather and climatology, ignition sources and rates, and the conditions and effects of multiple ecological disturbance interactions (e.g. windfall, wildlife interactions, plant diseases, plus fire) (White, 1979), and notably, prior to significant modification by human agency. Fire regimes in the mixed-species broadleaf forests that are *Podocarpus*- or *Juniperus*-dominated experience low-frequency (not quantified in previous studies), high-severity, stand-replacing fires that have been observed to be replaced by even-aged stands (Wimbush, 1937; Bussmann, 2001). Fire frequency distributions and quantifications of ‘low-frequency’ fires, with return intervals longer than several decades, have not been published in previous studies. Fire statistics of the past few decades at lower elevation agroforestry areas in the leeward northwestern area of Mount Kenya provide some insight into spatiotemporal patterns (Poletti *et al.*, 2019). Fires can benefit both *Podocarpus* and *Juniperus* forests, leading to nearly monospecific stands, and dominance may also relate to seed germination conditions or local site factors (Sharew *et al.*, 1996). Other forest type associations with abundant *Ocotea* or *Hagenia* have overlapping hydroclimatic ranges and elevational distributions on the highlands of eastern Africa, supporting the importance of non-climatic ecological controls on forest compositions of the co-dominant trees (Bussmann, 2001).

Hagenia forests benefit from disturbances that cause open canopies with abundant light to establish and maintain and *Hagenia* seeds, which are easily wind-blown in large numbers to open areas (Fetene and Feleke, 2001; Lange *et al.*, 1997; Young *et al.*, 2017; Grímsson *et al.*, 2021). Mature *Hagenia* trees are fire-adapted with relatively flakey, resistant bark (Fetene and Feleke, 2001) and bole architecture that reduces fuel laddering from the ground surface to canopy. In *Hagenia*

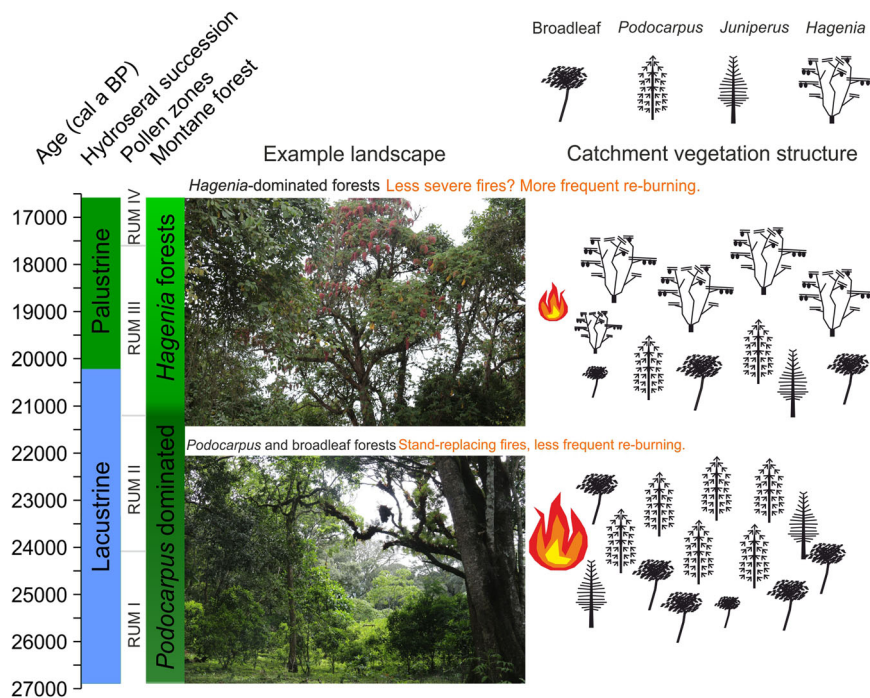


Figure 5. Pollen zones and data are summarized into forest type, inferred forest structure and fire type schematics at middle and right of the diagram. Photographs by Colin Courtney Mustaphi.

forests, fire regimes may be characterized by lower intensity burns that are more frequent, and potentially, surface fires if graminoid and detrital fuels (litter) accumulate in less dense forests (Fig. 5). Even in relatively dense *Hagenia* stands, grazing–fire interactions in modern forests of Ethiopia inhibited surface fire activity (Johansson and Granström, 2020), but herbivore grazing pressures prior to African defaunation during the Pleistocene and Holocene would have been different from what is observed today (Phelps *et al.*, 2020; and see Hempsom *et al.*, 2017). In some cases, very large individual *Hagenia* trees tower above the surrounding canopy, such as on some slopes in Ethiopia (Umer *et al.*, 2007) and some of the northern Tanzania highlands. An example is along the Them River catchment, Mount Meru, although this could be due to conservation interventions and not solely abiotic ecological disturbance regimes. *Hagenia* at its upper elevation limit can persist in fire-sheltered areas among Ericaceous vegetation, but may be reduced by short-duration (not quantified) FRIs (Johansson and Granström, 2020) if the fire severity is sufficient enough to cause mortality (see also Gil-Romera *et al.*, 2019). The establishment of *Hagenia* stands modifies surface fuels through the seasonal accumulation of large numbers of shed flower parts and anemophilous seeds and may modify soil nutrients over the long term (Habtemariam and Woldetsadik, 2019) (Fig. 5).

Challenges and opportunities for future research

Previous observations and explanations have suggested the role of stand-replacing fire and complex fire–vegetation interactions for some of the spatial vegetation patterns in highland forests across eastern Africa (Wimbush, 1937; Lange *et al.*, 1997; Wesche, 2000). Re-analysis of the Rumuiku sediment–charcoal record presented here generated the first quantitative estimates of forest fires in tropical Afrotropical forests. Charcoal-based fire reconstruction methods have been developed for lacustrine deposits in ecosystems with long FRIs that experience high-severity fires, for example boreal forests (Higuera *et al.*, 2009; Clear *et al.*, 2015), temperate mixed conifer-dominated forests (Long *et al.*, 1998; Gavin *et al.*, 2006; Morris *et al.*, 2013; Courtney Mustaphi and Pisaric, 2013, 2014a; Davis *et al.*, 2016) and forests with mixed-severity fire regimes (Courtney Mustaphi and Pisaric, 2014a). Aggregating sediment charcoal records is

also useful for comparisons between different sites (Daniau *et al.*, 2010) at intermediate and larger spatial scales (Baker, 1989; Falk *et al.*, 2007). Sediment–charcoal studies in temperate ecosystems have the potential to be compared with dendrochronological palaeofire evidence (Brossier *et al.*, 2014; Barhouni *et al.*, 2019) and observational records (Courtney Mustaphi and Pisaric, 2018). Dendrochronological sources of paleofire evidence have yet to be applied to tropical montane forest of eastern Africa (Henry *et al.*, 2019b). Remote sensing products, such as Royal Air Force air photography (from the 1940s and 1950s), early satellite observations (1960s–1980s), in combination with modern earth observations and fire detection satellites could provide some additional evidence for decadal-scale fire activity in the mountain forests. These additional tools are limited by temporal and spatial resolutions, and data aggregation challenges, and still lack the long duration for centennial-scale FRIs (Marchant *et al.*, 2018; Courtney Mustaphi *et al.*, 2019). Archival sources also supplement historical knowledge of fire activity, yet available sources have focused on fires in savannas and shrublands (ex. Sinclair, 2012), whereas fires in the moist montane forests have less frequently been presented (Wood, 1965a, 1965b; Spinage, 2012; Aleman *et al.*, 2018).

Recent observational fire records are limited for exploring past fire regimes as the recent history reflects the significantly altered direct and indirect anthropogenic effects, such as accidental or purposeful burning, introduced plant taxa, and forest wildlife defaunation. Local-scale modelling provides another source of evidence for fire regimes in wet tropical forests, but many studies have focused on regional, continental and global scales (Hantson *et al.*, 2016, 2017, 2020). Modelling fire at smaller spatial extents would be more applicable for national, subnational and land management institutions for characterizing and planning ecosystem management. Exploring fire models, both heuristic (Van Wagner, 1978; Johnson and Gutsell, 1994; McCarthy *et al.*, 2001; Iglesias *et al.*, 2015) and computational (Pfeiffer *et al.*, 2013; Lasslop *et al.*, 2014, 2018; Hantson *et al.*, 2020), for relatively small spatial areas have yet to be developed for the montane forests of eastern Africa (Lasslop *et al.*, 2016).

Analysing the potential of other palaeoenvironmental research approaches, or combined approaches, for palaeofire

records and disturbance ecology has yet to be a major focus in tropical ecosystems. Use can be made of other palaeoenvironmental archives (tree rings, soils, cave, marine sediments, glacial ice) (Marlon, 2020), other sediment analyses of fire proxies such as pyrogenic chemicals (Battistel *et al.*, 2017; Karp *et al.*, 2020), subfossil charcoal morphologies (Courtney Mustaphi and Pisaric, 2014b; Courtney Mustaphi *et al.*, 2022; Hubau *et al.*, 2015) and historical ecology (Phillips, 1965; Fanstone, 2016). Dendrochronological techniques for establishing past FRIs have yet to be developed for these tropical forests and have not been used to establish estimates (Higuera *et al.*, 2011b; Brossier *et al.*, 2014; Barhoumi *et al.*, 2019). In the tropics, there has been some use of long-lived trees for investigating stand age distributions (Swart, 1963; Coughenour *et al.*, 1990; Patrut *et al.*, 2013) and stand ages (Wyant and Reid, 1992; Martin and Moss, 1997; Maingi, 2006; Patrut *et al.*, 2020), including applications for fire histories by analysing fire scars on trees (Richardson, 1988; Verlinden and Laamanen, 2006; Patrut *et al.*, 2010). Only a handful of dendroclimatological records exist for eastern Africa and their potential has yet to be fully investigated (Trouet *et al.*, 2006). Analyses of soil profiles using sedimentological, palaeobotanical and palaeofire techniques add additional evidence on past fire activity (Kasin *et al.*, 2013; Montade *et al.*, 2018). In soil stratigraphies, temporal resolution and uncertainties are rarely as constrained as lacustrine and palustrine sediment records, such as Rumuiku (Rucina *et al.*, 2009). Anthropological studies in eastern Africa have investigated purposeful human use of fire on savannah landscapes in eastern Africa (Anderson and Lochery, 2008; Butz, 2009; Kamau and Medley, 2014), coastal forests (Ming'ate and Bollig, 2016), and in the foothill forests of mountain areas (Nyongesa and Vacik, 2019). Newspaper reports of forest fires, early European documents and Forest Service archives have not been fully analysed to develop historical and archival records of past fire activity (for examples see Spinage, 2012; Nyongesa and Vacik, 2018; Henry *et al.*, 2019b). Fire and vegetation modelling studies focused on the catchments of Mount Kenya would be useful for exploring biodiversity, forest structural diversity and human–environment interactions relevant to land management and policy.

The spatial and temporal patterns of ecological disturbances deserve particular attention in the moist Afromontane forests, to explore and analyse disturbance effects on the spatial distribution of forest types and biodiversity and ecosystem resilience of managed forests of high conservation and societal value. Few palaeoenvironmental studies have investigated multiple ecological disturbance interactions, and records such as Rumuiku offer some potential for multi-proxy single study site analyses using the potential of high-resolution subsampling designs and geochronologies (see Courtney Mustaphi and Pisaric, 2018; Rey *et al.*, 2019). Disturbance dynamics have been shown to be important in nearby wooded tropical ecosystems (Anderson *et al.*, 2008). For example, the combination of elephant damage plus fires has been shown to be an important contributor to savannah tree demographics and mortality in parts of the Serengeti (Dublin *et al.*, 1990; Sharam *et al.*, 2006; Morrison *et al.*, 2016; Rugamalila *et al.*, 2016). The interaction of several ecological disturbance types in forests would be a useful avenue for investigating the legacy effects of multiple processes and for conservation.

Prospects

Quantification of fire regimes is a shared knowledge gap among the research agendas of palaeoecological research, ecology, conservation sciences and land management

(Veblen, 2003; Rull, 2010, 2014; Gillson and Marchant, 2014; Courtney Mustaphi *et al.*, 2019). Archival and observational data should be collated and analysed to estimate historical fire frequency regimes around Mount Kenya. The results presented here are the first estimations of FRIs using one palaeofire technique applied to a single mid-montane catchment on the western side of the mountain. This example presents a record of past ranges of FRI variability of montane forests prior to significant (or evident) anthropogenic modification and a geological period with lower atmospheric CO₂. As climate change, introduced species, CO₂ increases and human population pressures increase on the remaining forested areas of the mountain, knowledge of fire regimes helps define priority forest stands and stands experiencing more frequent fires. Fire regime changes facilitate ecological changes and could be a consideration for allocating forest fire suppression effort, fire prevention or areas for non-intervention on the mountain. Changing fire regimes at the interfaces of primary forests and agroforestry causes changes at the ecotonal edges (Thijs *et al.*, 2014; Wekesa *et al.*, 2019; Cardoso *et al.*, 2021) as well as at indigenous ecotonal zones within protected areas (Wesche, 2000; Wesche *et al.*, 2003; Hemp and Beck, 2001). Future projects investigating palaeofire in Afromontane forests should be co-produced with land users, and land management and academic stakeholders to align priority research questions (Seddon *et al.*, 2014; Chazdon *et al.*, 2017) and facilitate the longer-term deployment of sediment and charcoal traps in the field to improve the calibration of sediment–charcoal studies to the level of development available in temperate forests (for an example see Adolf *et al.*, 2018). Studies quantifying ecological disturbance regimes are necessary for the long-term management of Afromontane forests, to understand spatially heterogeneous patterns of compositions and structure and the influence on biodiversity on ecosystem functioning. Rehabilitation of montane forest areas requires knowledge of disturbance ecologies to manage wildlife habitat spaces, fog forest ecohydrology (Omoro *et al.*, 2010; Aerts *et al.*, 2011; Thijs *et al.*, 2014; Los *et al.*, 2019), and riparian (Thijs *et al.*, 2012) and wetland areas (Wesche *et al.*, 2003; Macharia *et al.*, 2010; Githumbi *et al.*, 2021) crucial to the 'water tower' ecosystem functioning of Mount Kenya (Funnell, 2003; Liniger *et al.*, 2005; Notter *et al.*, 2007) and to the communities around central Kenya (Bussmann, 1999; Wiesmann *et al.*, 2000; Aeschbacher *et al.*, 2005).

Conclusions

The Rumuiku wetland palaeoenvironmental record provided an opportunity to develop a first-order estimation of past ranges of FRIs for this small mid-montane catchment. The montane forest assemblages represented in the Rumuiku record still persist on the mountain today, but have been modified by climate variability, land use and forest resource pressures and introduced species throughout the Holocene to present. The charcoal record shows a stepwise change in forest type at 21 200 cal a BP, and we used the charcoal record from 27 000 to 21 200 cal a BP, during Rumuiku pollen zones I and II, to reconstruct fire events and frequencies during the *Podocarpus*- and *Juniperus*-dominated montane forest. The results show a temporal heterogeneity in a single catchment area, showing that fires potentially may be relatively rapid reburns (<100 years), of moderate duration (100–200 years), and infrequently very long (200–430 years). Future work should make more use of collating and interpreting observational records complemented with archival research, computer models and the development of

conceptual heuristic models for fire in moist montane forests to improve tropical palaeofire investigations. Research should garner multistakeholder co-produced perspectives on forest management to improve the longevity and success of research outputs. Alignment of research agendas with land management and local land users and improved dissemination promotes research insights that inform land management options and decisions (Capitani *et al.*, 2016; Courtney Mustaphi *et al.*, 2019; Kariuki *et al.*, 2021). The observed pattern toward larger fires in tropical latitudes and tendency for anthropogenic activities to homogenize forest fire regimes could put forest biodiversity at further risk on Mount Kenya. Quantifying the spatial and temporal distributions of FRIs and other fire regime components (fire sizes, seasonality, intensities, severities; Maezumi *et al.*, 2021) are important for long-term management of these moist montane forests with relatively long durations (decades to centuries) between fires but with a degree of spatial heterogeneity that remains unquantified.

Supporting information

Additional supporting information can be found in the online version of this article.

Supplementary Figure 1. View of Rumuiku wetland from the eastern edge facing southwest (0.118583°S, 37.5611°E; 2160 m asl), Mount Kenya National Park and forest reserve, Kenya (Courtney Mustaphi *et al.*, 2021). Photographs taken in 2014 by Colin Courtney Mustaphi.

Supplementary Figure 2. Signal to Noise Index (SNI) and Kolmogorov-Smirnov Goodness of Fit (GOF) p values of the Rumuiku wetland charcoal concentration data using five techniques to define the varying background rate of charcoal accumulation across variable moving window lengths. The median of the ensemble runs (black lines), the 25th and 75th percentiles (red lines), and the 5th and 95th percentiles (blue lines), are shown for SNI and GOF. Window lengths shaded in grey were rejected and the zone in white was retained during the analysis and the number is shown at top (N). Output designs and code by Blarquez *et al.* (2013) and incorporated Higuera *et al.* (2009) and Gavin *et al.* (2006).

Supplementary Figure 3. Ensemble sums of reconstructed fire events that contributed to establishing robust fire events (RFEs; '+' symbols) (Blarquez *et al.*, 2013).

Supplementary Figure 4. Fire return interval (FRI) distributions of each of the five techniques for background charcoal accumulation rate estimation techniques (Blarquez *et al.*, 2013). Weibull distributions (black line) were fitted and parameters and number of fire events shown.

Supplementary Figure 5. The ensemble of fire frequency reconstructions (Blarquez *et al.*, 2013). Warm colours show the mid percentiles 25–75, cool colours show higher percentiles >75 and <25, the median (black line), and dashed black lines show a filtering of the CHARraw using a rLOWESS with a 700 year window width (the bootstrapped 90% confidence intervals are displayed using dashed lines).

Acknowledgements. We thank Rose Warigia, Ann Mwendu Kaloyo, Rahab Kinyanjui and Joseph Mutua for fieldwork help; Laura Marchant, Esther Githumbi, Lauren Shotter and Maria Gehrels for laboratory work; Lydia King, Katherine Selby, Olivier Blarquez, Paramita Punwong and Oliver Heiri for useful discussions of the manuscript; and the peer reviewers and editor. We acknowledge Maarten Blaauw, Olivier Blarquez, Phil Higuera and Stephen Juggins for open access to computer scripts and software. We thank the British Institute in Eastern Africa (BIEA), Nairobi, Kenya, for logistical support. The NERC Radiocarbon Facility (NRCF) hosted by the Scottish

Universities Environmental Research Centre (SUERC) is thanked for radiocarbon dates through allocation award 1226.0407 to R.M. This research was partially funded by a European Commission Skłodowska-Curie Initial Training Network (FP7-PEOPLE-2013-ITN project number 606879) and the Adaptation and Resilience to Climate Change (ARCC) project through the Sustainability and Resilience: Tackling Climate and Environmental Changes programme funded by the Swedish Research Council (Vetenskapsrådet), Sida, and Formas (2016-06355) and administered through Uppsala University; both awarded to R.M. and principal investigator Paul Lane. Open access funding provided by Universitat Basel.

Abbreviations. asl, above sea level; BP, before present (1950 calendar year); CE, Common Era; CHAR, charcoal accumulation rate; FRI, fire return interval; LOWESS, locally weighted scatterplot smoothing; RFE, robust fire event; SNI, signal-to-noise index.

References

- Adolf C, Wunderle S, Colombaroli D, Weber H, Gobet E, Heiri O, van Leeuwen JF, Bigler C, Connor SE, Gařka M, La Mantia T. 2018. The sedimentary and remote-sensing reflection of biomass burning in Europe. *Global Ecology and Biogeography* **27**(2): 199–212.
- Aerts R, Thijs KW, Lehouck V, Beentje H, Bytebier B, Matthyssen E, Gulincx H, Lens L, Muys B. 2011. Woody plant communities of isolated Afromontane cloud forests in Taita Hills, Kenya. *Plant Ecology* **212**(4): 639–649.
- Aeschbacher J, Liniger H, Weingartner R. 2005. River water shortage in a highland–lowland system. *Mountain Research and Development* **25**(2): 155–162.
- Aleman JC, Jarzyna MA, Staver AC. 2018. Forest extent and deforestation in tropical Africa since 1900. *Nature Ecology & Evolution* **2**(1): 26–33.
- Anderson D, Lochery E. 2008. Violence and exodus in Kenya's Rift Valley, 2008: predictable and preventable? *Journal of Eastern African Studies* **2**(2): 328–343.
- Anderson TM, Dempewolf J, Metzger KL, Reed DN, Serneels S. 2008. Generation and maintenance of heterogeneity in the Serengeti ecosystem. In *Serengeti III: human impacts on ecosystem dynamics*, Sinclair ARE *et al.* (eds.) University of Chicago Press: Chicago; 135–182.
- Archibald S, Staver AC, Levin SA. 2012. Evolution of human-driven fire regimes in Africa. *Proceedings of the National Academy of Sciences* **109**(3): 847–852.
- Armstrong CG, Shoemaker AC, McKechnie I, Ekblom A, Szabó P, Lane PJ, McAlvay AC, Boles OJ, Walshaw S, Petek N, Gibbons KS. 2017. Anthropological contributions to historical ecology: 50 questions, infinite prospects. *PLoS One* **12**(2): e0171883.
- Baker WL. 1989. Effect of scale and spatial heterogeneity on fire-interval distributions. *Canadian Journal of Forest Research* **19**(6): 700–706.
- Bamber RN. 1982. Sodium hexametaphosphate as an aid in benthic sample sorting. *Marine Environmental Research* **7**(4): 251–255.
- Barhoumi C, Peyron O, Joannin S, Subetto D, Kryshen A, Drobyshev I, Girardin MP, Brossier B, Paradis L, Pastor T, Alleaume S. 2019. Gradually increasing forest fire activity during the Holocene in the northern Ural region (Komi Republic, Russia). *The Holocene* **29**(12): 1906–1920.
- Barker PA, Street-Perrott FA, Leng MJ, Greenwood PB, Swain DL, Perrott RA, Telford RJ, Ficken KJ. 2001. A 14,000-year oxygen isotope record from diatom silica in two alpine lakes on Mt. Kenya. *Science* **292**(5525): 2307–2310.
- Battistel D, Argiriadis E, Kehrwald N, Spigariol M, Russell JM, Barbante C. 2017. Fire and human record at Lake Victoria, East Africa, during the Early Iron Age: Did humans or climate cause massive ecosystem changes? *The Holocene* **27**(7): 997–1007.
- BBC News. 2020. Kilimanjaro: Fire breaks out on Africa's tallest mountain. Available: <https://www.bbc.com/news/world-africa-54508243>
- Blaauw M, Christen JA. 2011a. Flexible paleoclimate age-depth models using an autoregressive gamma process. *Bayesian Analysis* **6**: 457–474.
- Blaauw M, Christen JA. 2011b. Bacon Manual. Version 2.2 (accessed March 19, 2021). http://chrono.qub.ac.uk/laau/annualBacon_2.2.pdf

- Blarquez O, Girardin MP, Leys B, Ali AA, Aleman JC, Bergeron Y, Carcaillet C. 2013. Paleofire reconstruction based on an ensemble-member strategy applied to sedimentary charcoal. *Geophysical Research Letters* **40**(11): 2667–2672.
- Bowman DM, Balch J, Artaxo P, Bond WJ, Cochrane MA, D'antonio CM, DeFries R, Johnston FH, Keeley JE, Krawchuk MA, Kull CA. 2011. The human dimension of fire regimes on Earth. *Journal of Biogeography* **38**(12): 2223–2236.
- Brossier B, Oris F, Finsinger W, Asselin H, Bergeron Y, Ali AA. 2014. Using tree-ring records to calibrate peak detection in fire reconstructions based on sedimentary charcoal records. *The Holocene* **24**(6): 635–645.
- Bussmann RW. 1996. Destruction and management of Mount Kenya's forests. *Ambio* **25**(5): 314–317.
- Bussmann RW. 1999. Growth rates of important East African montane forest trees, with particular reference to those of Mount Kenya. *Journal of East African Natural History* **88**(1): 69–78.
- Bussmann R. 2001. Succession and regeneration patterns of East African mountain forests. A review. *Systematics and Geography of Plants* **71**(2): 959–974.
- Bussmann R. 2002. Islands in the Desert—Forest Vegetation of Kenya's Smaller Mountains and Highland Areas (Nyiru, Ndotu, Kulal, Marsabit, Loroghi, Ndare, Mukogodo, Porror, Mathews, Gakoe, Imenti, Ngaia, Nyambeni, Loita, Nguruman, Nairobi). *Journal of East African Natural History* **91**(1): 27–79.
- Bussmann RW. 2006. Vegetation zonation and nomenclature of African mountains—an overview. *Lyonia* **11**(1): 41–66.
- Bussmann RW, Beck E. 1995. The forests of Mt. Kenya (Kenya), a phytosociological synopsis. *Phytocoenologia* **24**(4): 467–560.
- Bussmann RW, Beck E. 1998. The plant communities of the forests of Mount Kenya – First Phytosociological and Ecological Data. In *African Mountains and Highlands – Planning for Sustainable Use of Mountain Resources*, Ojani FF (ed.) United Nations University: Tokyo; 96–107.
- Butz RJ. 2009. Traditional fire management: historical fire regimes and land use change in pastoral East Africa. *International Journal of Wildland Fire* **18**(4): 442–450.
- Cardoso AW, Oliveras I, Abernethy KA, Jeffery KJ, Glover S, Lehmann D, Edzang Ndong J, White LJ, Bond WJ, Malhi Y. 2021. A distinct ecotonal tree community exists at central African forest–savanna transitions. *Journal of Ecology* **109**(3): 1170–1183.
- Castro AP. 1991a. Indigenous Kikuyu agroforestry: A case study of Kirinyaga, Kenya. *Human Ecology* **19**(1): 1–18.
- Castro AP. 1991b. The Southern Mount Kenya forest since independence: A social analysis of resource competition. *World Development* **19**(12): 1695–1704.
- Chazdon RL, Brancalion PH, Lamb D, Laestadius L, Calmon M, Kumar C. 2017. A policy-driven knowledge agenda for global forest and landscape restoration. *Conservation Letters* **10**(1): 125–132.
- Clear JL, Seppä H, Kuosmanen N, Bradshaw RH. 2015. Holocene stand-scale vegetation dynamics and fire history of an old-growth spruce forest in southern Finland. *Vegetation History and Archaeobotany* **24**(6): 731–741.
- Coe MJ. 1967. The ecology of the alpine zone of Mount Kenya. In *Monographiae Biologicae* (Vol. 17), van Ooye P (ed.). The Hague: Dr. W. Junk Publishers, 1–136.
- Coetzee JA. 1964. Evidence for a considerable depression of the vegetation belts during the Upper Pleistocene on the East African mountains. *Nature* **204**(4958): 564–566.
- Coetzee JA. 1967. Pollen analytical studies in East and Southern Africa. *Palaeoecology of Africa* **3**: 1–146.
- Cooremans B, Mahaney WC. 1990. Palynology of a Quaternary paleosol sequence on Mount Kenya, East Africa. *Palaeoecology of Africa* **21**: 283–294.
- Coughenour MB, Ellis JE, Popp RG. 1990. Morphometric relationships and developmental patterns of *Acacia tortilis* and *Acacia reficiens* in Southern Turkana, Kenya. *Bulletin of the Torrey Botanical Club* **117**: 8–17.
- Courtney Mustaphi CJ, Pisaric MFJ. 2013. Varying influence of climate and aspect as controls of montane forest fire regimes during the late Holocene, south-eastern British Columbia, Canada. *Journal of Biogeography* **40**(10): 1983–1996.
- Courtney Mustaphi CJ, Pisaric MFJ. 2014a. Holocene climate–fire–vegetation interactions at a subalpine watershed in southeastern British Columbia, Canada. *Quaternary Research* **81**(2): 228–239.
- Courtney Mustaphi CJ, Pisaric MFJ. 2014b. A classification for macroscopic charcoal morphologies found in Holocene lacustrine sediments. *Progress in Physical Geography* **38**(6): 734–754.
- Courtney Mustaphi CJ, Pisaric MFJ. 2018. Forest vegetation change and disturbance interactions over the past 7500 years at Sasquatch Lake, Columbia Mountains, western Canada. *Quaternary International* **488**: 95–106.
- Courtney Mustaphi CJ, Davis EL, Perreault JT, Pisaric MFJ. 2015. Spatial variability of recent macroscopic charcoal deposition in a small montane lake and implications for reconstruction of watershed-scale fire regimes. *Journal of Paleolimnology* **54**(1): 71–86.
- Courtney Mustaphi CJ, Gajewski K, Marchant R, Rosqvist G. 2017. A late Holocene pollen record from proglacial Oblong Tarn, Mount Kenya. *PLoS One* **12**(9): e0184925.
- Courtney Mustaphi CJ, Capitani C, Boles O, Kariuki R, Newman R, Munishi L, Marchant R, Lane P. 2019. Integrating evidence of land use and land cover change for land management policy formulation along the Kenya–Tanzania borderlands. *Anthropocene* **28**: 100228.
- Courtney Mustaphi CJ, Kinyanjui R, Shoemaker A, Mumbi C, Muiruri V, Marchant L, Rucina S, Marchant R. 2021a. A 3000-year record of vegetation changes and fire at a high-elevation wetland on Kilimanjaro, Tanzania. *Quaternary Research* **99**: 34–62.
- Courtney Mustaphi CJ, Rucina SM, King L, Selby K, Marchant R. 2021b. A palaeovegetation and diatom record of tropical montane forest fire, vegetation and hydrosere changes on Mount Kenya from 27000–16500 cal yr BP. *Palaeogeography, Palaeoclimatology, Palaeoecology* **581**: 110625.
- Courtney Mustaphi CJ, Vos HC, Marchant R, Beale C. 2022. Charcoal whirlwinds and post-fire observations in Serengeti National Park savannahs. *Tanzania Journal of Science* **48**(2): 460–473.
- Cranworth BFG. 1912. *A Colony in the Making: or, Sport and Profit in British East Africa*. Macmillan: London. Available: <https://doi.org/10.5962/bhl.title.27475>
- Crawford AJ, Vachula RS. 2019. Peak analysis of sedimentary charcoal records: Some underlying assumptions and potential pitfalls. *Quaternary Science Reviews* **225**: 106002.
- Daniau AL, Harrison SP, Bartlein PJ. 2010. Fire regimes during the Last Glacial. *Quaternary Science Reviews* **29**(21–22): 2918–2930.
- Davis EL, Courtney Mustaphi CJ, Gall A, Pisaric MFJ, Vermaire JC, Moser KA. 2016. Determinants of fire activity during the last 3500 years at a wildland–urban interface, Alberta, Canada. *Quaternary Research* **86**(3): 247–259.
- Dublin HT, Sinclair AR, McGlade J. 1990. Elephants and fire as causes of multiple stable states in the Serengeti–Mara woodlands. *The Journal of Animal Ecology* **59**(3): 1147–1164.
- Eckert S, Kiteme B, Njuguna E, Zaehring JG. 2017. Agricultural Expansion and Intensification in the Foothills of Mount Kenya: A Landscape Perspective. *Remote Sensing* **9**: 784.
- Fanstone BP. 2016. The pursuit of the 'good forest' in Kenya, c. 1890–1963: the history of the contested development of state forestry within a colonial settler state. PhD thesis. University of Stirling.
- FAO. 2012. Report Community Based Fire Management Regional Workshop 26–28 November 2012, Arusha, Tanzania. Sustainable Forest Management in a Changing Climate FAO–Finland Forestry Programme – Tanzania. Dar es Salaam.
- Fetene M, Feleke Y. 2001. Growth and photosynthesis of seedlings of four tree species from a dry tropical afro-montane forest. *Journal of Tropical Ecology* **17**: 269–283.
- Ficken KJ, Street-Perrott FA, Perrott RA, Swain DL, Olago DO, Eglinton G. 1998. Glacial/interglacial variations in carbon cycling revealed by molecular and isotope stratigraphy of Lake Nkunga, Mt. Kenya, East Africa. *Organic Geochemistry* **29**(5–7): 1701–1719.
- Ficken KJ, Wooller MJ, Swain DL, Street-Perrott FA, Eglinton G. 2002. Reconstruction of a subalpine grass-dominated ecosystem, Lake Rutundu, Mount Kenya: a novel multi-proxy approach. *Palaeogeography, Palaeoclimatology, Palaeoecology* **177**(1–2): 137–149.

- Finch J, Marchant R, Courtney Mustaphi CJ. 2017. Ecosystem change in the South Pare Mountain bloc, Eastern Arc Mountains of Tanzania. *The Holocene* **27**(6): 796–810.
- Finsinger W, Kelly R, Fevre J, Magyari EK. 2014. A guide to screening charcoal peaks in macrocharcoal-area records for fire-episode reconstructions. *The Holocene* **24**(8): 1002–1008.
- Funnell D. 2003. Mountains in East Africa: the missing Commonwealth dimension. *The Round Table* **92**(371): 501–515.
- Gathaara G. 1999. *Aerial Survey of the Destruction of Mt. Kenya, Imenti and Ngare Ndare Forest Reserves February–June 1999*. FAO: Rome.
- Gavin DG, Hu FS, Lertzman K, Corbett P. 2006. Weak climatic control of stand-scale fire history during the late Holocene. *Ecology* **87**(7): 1722–1732.
- Gil-Romera G, Adolf C, Benito BM, Bittner L, Johansson MU, Grady DA, Lamb HF, Lemma B, Fekadu M, Glaser B, Mekonnen B. 2019. Long-term fire resilience of the Ericaceous Belt, Bale Mountains, Ethiopia. *Biology Letters* **15**(7): 20190357.
- Gillson L, Marchant R. 2014. From myopia to clarity: sharpening the focus of ecosystem management through the lens of palaeoecology. *Trends in Ecology & Evolution* **29**(6): 317–325.
- Githumbi E, Courtney Mustaphi C, Marchant R. 2021. Late Pleistocene and Holocene Afromontane vegetation variability at a headwater wetland within the Eastern Mau Forest, Kenya. *Journal of Quaternary Science* **36**(2): 239–254.
- Grimsson F, Ulrich S, Coiro M, Graham SA, Jacobs BF, Currano ED, Xafis A, Zetter R. 2021. *Hagenia* from the early Miocene of Ethiopia: Evidence for possible niche evolution? *Ecology and Evolution* **11**(10): 5164–5186.
- Habtemariam AA, Woldetsadik AM. 2019. Current distribution, regeneration and management practice of *Hagenia abyssinica* in different agroforestry systems of Ethiopia: A review. *International Journal of Biodiversity and Conservation* **11**(9): 266–271.
- Hamilton AC. 1982. "Upper Quaternary pollen diagrams from montane East Africa". In *Environmental History of East Africa: A Study of the Quaternary*, Hamilton AC ed. Academic Press: London; 111–191.
- Hamilton AC, Taylor D. 1991. History of climate and forests in tropical Africa during the last 8 million years. *Climatic Change* **19**: 65–78.
- Hansen MC, Potapov PV, Moore R, Hancher M, Turubanova SA, Tyukavina A, Thau D, Stehman SV, Goetz SJ, Loveland TR, Kommareddy A. 2013. High-resolution global maps of 21st-century forest cover change. *Science* **342**(6160): 850–853.
- Hantson S, Arneth A, Harrison SP, Kelley DI, Prentice IC, Rabin SS, Archibald S, Mouillot F, Arnold SR, Artaxo P, Bachelet D. 2016. The status and challenge of global fire modelling. *Biogeosciences* **13**(11): 3359–3375.
- Hantson S, Scheffer M, Pueyo S, Xu C, Lasslop G, van Nes EH, Holmgren M, Mendelsohn J. 2017. Rare, Intense, Big fires dominate the global tropics under drier conditions. *Scientific Reports* **7**(1): 1–5.
- Hantson S, Kelley DI, Arneth A, Harrison SP, Archibald S, Bachelet D, Forrest M, Hickler T, Lasslop G, Li F, Mangeon S. 2020. Quantitative assessment of fire and vegetation properties in simulations with fire-enabled vegetation models from the Fire Model Intercomparison Project. *Geoscientific Model Development* **13**(7): 3299–3318.
- Hawthorne D, Courtney Mustaphi CJ, Aleman JC, Blarquez O, Colombaroli D, Daniau AL, Marlon JR, Power M, Vanniere B, Han Y, Hantson S. 2018. Global Modern Charcoal Dataset (GMCD): A tool for exploring proxy-fire linkages and spatial patterns of biomass burning. *Quaternary International* **488**: 3–17.
- Heckmann M, Muiruri V, Boom A, Marchant R. 2014. Human–environment interactions in an agricultural landscape: A 1400-yr sediment and pollen record from North Pare, NE Tanzania. *Palaeogeography, Palaeoclimatology, Palaeoecology* **406**: 49–61.
- Hedberg O. 1951. Vegetation belts of the East African mountains. *Svensk Botanisk Tidskrift* **45**: 140–202.
- Hedberg O. 1955. Altitudinal zonation of the vegetation on the East African mountains. *Proceedings of the Linnean Society of London* **165**(2): 134–136.
- Hemp A. 2005. Climate change-driven forest fires marginalize the impact of ice cap wasting on Kilimanjaro. *Global Change Biology* **11**(7): 1013–1023.
- Hemp A. 2020. Fires shaped Mount Kilimanjaro's unique environment. Now they threaten it. *The Conversation*. Available: <https://theconversation.com/fires-shaped-mount-kilimanjaros-unique-environment-now-they-threaten-it-149286>
- Hemp A, Beck E. 2001. *Erica excelsa* as a fire-tolerating component of Mt. Kilimanjaro's forests. *Phytocoenologia* **31**(4): 449–475.
- Hemp A, Hemp C. 2018. Broken bridges: The isolation of Kilimanjaro's ecosystem. *Global Change Biology* **24**(8): 3499–3507.
- Hempson GP, Archibald S, Bond WJ. 2017. The consequences of replacing wildlife with livestock in Africa. *Scientific Reports* **7**(1): 1–10.
- Hennebelle A, Aleman JC, Ali AA, Bergeron Y, Carcaillet C, Grondin P, Landry J, Blarquez O. 2020. The reconstruction of burned area and fire severity using charcoal from boreal lake sediments. *The Holocene* **30**(10): 1400–1409.
- Henry MC, McCarty J, Maingi J. 2019a. Why Mount Kenya is burning and what can be done to stop the fires. *The Conversation*. Available: <https://theconversation.com/why-mount-kenya-is-burning-and-what-can-be-done-to-stop-the-fires-112842>
- Henry MC, Maingi J, McCarty J. 2019b. Fire on the Water Towers: Mapping Burn Scars on Mount Kenya Using Satellite Data to Reconstruct Recent Fire History. *Remote Sensing* **11**(2): 104.
- Higuera PE, Brubaker LB, Anderson PM, Hu FS, Brown TA. 2009. Vegetation mediated the impacts of postglacial climate change on fire regimes in the south-central Brooks Range, Alaska. *Ecological Monographs* **79**(2): 201–219.
- Higuera PE, Gavin DG, Henne PD, Kelly RF. 2010. Recent advances in the analysis and interpretation of sediment-charcoal records. *Open Ecology Journal* **3**(1): 6–23.
- Higuera PE, Gavin DG, Bartlein PJ, Hallett DJ. 2011a. Peak detection in sediment–charcoal records: impacts of alternative data analysis methods on fire-history interpretations. *International Journal of Wildland Fire* **19**(8): 996–1014.
- Higuera PE, Whitlock C, Gage JA. 2011b. Linking tree-ring and sediment-charcoal records to reconstruct fire occurrence and area burned in subalpine forests of Yellowstone National Park, USA. *The Holocene* **21**(2): 327–341.
- Hobley CW. 1914. The alleged desiccation of East Africa. *Geographical Journal* **44**: 467–477.
- Hubau W, Van den Bulcke J, Van Acker J, Beeckman H. 2015. Charcoal-inferred Holocene fire and vegetation history linked to drought periods in the Democratic Republic of Congo. *Global Change Biology* **21**(6): 2296–2308.
- Hutchinson D. 1907. *East Africa Protectorate: Report on the forests of Kenya*. His Majesty's Stationary Office: London.
- Iglesias V, Yospin GI, Whitlock C. 2015. Reconstruction of fire regimes through integrated paleoecological proxy data and ecological modeling. *Frontiers in Plant Science* **5**: 785.
- Johansson MU, Granström A. 2020. Fire and grazing controlling a tropical tree line: Effects of long-term grazing exclusion in Bale Mountains, Ethiopia. *Journal of Vegetation Science* **31**(5): 841–853.
- Johnson EA, Gutsell SL. 1994. Fire Frequency Models, Methods and Interpretations. In *Advances in Ecological Research*, Begon M, Fitter AH eds. **25**. Academic Press: London; 239–287.
- Johnson EA, Wagner CV. 1985. The theory and use of two fire history models. *Canadian Journal of Forest Research* **15**(1): 214–220.
- Jowsey PC. 1966. An improved peat sampler. *New Phytologist* **65**: 245–248.
- Jump AS, Carr M, Ahrends A, Marchant R. 2014. Genetic divergence during long-term isolation in highly diverse populations of tropical trees across the Eastern Arc Mountains of Tanzania. *Biotropica* **46**(5): 565–574.
- Kamau PN, Medley KE. 2014. Anthropogenic fires and local livelihoods at Chyulu Hills, Kenya. *Landscape and Urban Planning* **124**: 76–84.
- Karanja SK. 2016. Density-Based Cluster Analysis of Fire Hot Spots in Kenya's Wildlife Protected Areas. MSc thesis. University of Nairobi, Kenya.
- Kariuki RW, Munishi L, Courtney Mustaphi CJ, Capitani C, Shoemaker A, Lane P, Marchant R. 2021. Integrating stakeholders' perspectives and spatial modelling to develop scenarios of future land use and land cover change in northern Tanzania. *PLoS ONE* **16**(2): e0245516.
- Karp AT, Holman AI, Hopper P, Grice K, Freeman KH. 2020. Fire distinguishers: Refined interpretations of polycyclic aromatic

- hydrocarbons for paleo-applications. *Geochimica et Cosmochimica Acta* **289**: 93–113.
- Kasin I, Blanck YL, Storaunet KO, Rolstad J, Ohlson M. 2013. The charcoal record in peat and mineral soil across a boreal landscape and possible linkages to climate change and recent fire history. *The Holocene* **23**(7): 1052–1065.
- Keane RE, Hessburg PF, Landres PB, Swanson FJ. 2009. The use of historical range and variability (HRV) in landscape management. *Forest Ecology and Management* **258**(7): 1025–1037.
- Kelly RF, Higuera PE, Barrett CM, Hu FS. 2011. A signal-to-noise index to quantify the potential for peak detection in sediment–charcoal records. *Quaternary Research* **75**(1): 11–17.
- Kindt R, Lilleso JP, Van Breugel P. 2007. Comparisons between original and current composition of indigenous tree species around Mount Kenya. *African Journal of Ecology* **45**(4): 633–644.
- KFS (Kenya Forest Service). 2010. Mt. Kenya Forest Reserve Management Plan 2010–2019. 2010. Available online: <http://www.kenyaforestservice.org/documents/MtKenya.pdf> (accessed on 7 April 2021).
- Kleinschroth F, Schöning C, Kung'u JB, Kowarik I, Cierjacks A. 2013. Regeneration of the East African timber tree *Ocotea usambarensis* in relation to historical logging. *Forest Ecology and Management* **291**: 396–403.
- Landres PB, Morgan P, Swanson FJ. 1999. Overview of the use of natural variability concepts in managing ecological systems. *Ecological Applications* **9**(4): 1179–1188.
- Lange S, Bussmann RW, Beck E. 1997. Stand structure and regeneration of the subalpine *Hagenia abyssinica* forests of Mt. Kenya. *Botanica Acta* **110**(6): 473–480.
- Lasslop G, Thonicke K, Kloster S. 2014. SPITFIRE within the MPI Earth system model: Model development and evaluation. *Journal of Advances in Modeling Earth Systems* **6**(3): 740–755.
- Lasslop G, Brovkin V, Reick CH, Bathiany S, Kloster S. 2016. Multiple stable states of tree cover in a global land surface model due to a fire-vegetation feedback. *Geophysical Research Letters* **43**(12): 6324–6331.
- Lasslop G, Moeller T, D'Onofrio D, Hantson S, Kloster S. 2018. Tropical climate–vegetation–fire relationships: multivariate evaluation of the land surface model JSBACH. *Biogeosciences* **15**(19): 5969–5989.
- Leys B, Brewer SC, McConaghy S, Mueller J, McLauchlan KK. 2015. Fire history reconstruction in grassland ecosystems: amount of charcoal reflects local area burned. *Environmental Research Letters* **10**(11): 114009.
- Leys BA, Commerford JL, McLauchlan KK. 2017. Reconstructing grassland fire history using sedimentary charcoal: Considering count, size and shape. *PLoS One* **12**(4): e0176445.
- Liniger H, Gikonyo J, Kiteme B, Wiesmann U. 2005. Assessing and managing scarce tropical mountain water resources. *Mountain Research and Development* **25**(2): 163–173.
- Long CJ, Whitlock C, Bartlein PJ, Millsbaugh SH. 1998. A 9000-year fire history from the Oregon Coast Range, based on a high-resolution charcoal study. *Canadian Journal of Forest Research* **28**(5): 774–787.
- Loomis SE, Russell JM, Verschuren D, Morrill C, De Cort G, Damsté JSS, Olago D, Eggermont H, Street-Perrott FA, Kelly MA. 2017. The tropical lapse rate steepened during the Last Glacial Maximum. *Science Advances* **3**(1): e1600815.
- Los SO, Street-Perrott FA, Loader NJ, Froyd CA, Cuní-Sánchez A, Marchant RA. 2019. Sensitivity of a tropical montane cloud forest to climate change, present, past and future: Mt. Marsabit, N. Kenya. *Quaternary Science Reviews* **218**: 34–48.
- Lynch JA, Clark JS, Stocks BJ. 2004. Charcoal production, dispersal, and deposition from the Fort Providence experimental fire: interpreting fire regimes from charcoal records in boreal forests. *Canadian Journal of Forest Research* **34**(8): 1642–1656.
- Macharia JM, Thenya T, Ndiritu GG. 2010. Management of highland wetlands in central Kenya: The importance of community education, awareness and eco-tourism in biodiversity conservation. *Biodiversity* **11**(1–2): 85–90.
- Maezumy SY, Gosling WD, Kirschner J, Chevalier M, Cornelissen HL, Heinecke T, McMichael CN. 2021. A modern analogue matching approach to characterize fire temperatures and plant species from charcoal. *Palaeogeography, Palaeoclimatology, Palaeoecology* **578**: 110580.
- Mahaney WC. 1986. Environmental impact in the Afroalpine and subalpine belts of Mount Kenya, East Africa. *Mountain Research and Development* **6**(3): 247–256.
- Maingi JK. 2006. Growth rings in tree species from the Tana river floodplain, Kenya. *Journal of East African Natural History* **95**(2): 181–211.
- Manzano S, Julier AC, Dirk CJ, Razafimanantsoa AH, Samuels I, Petersen H, Gell P, Hoffman MT, Gillson L. 2020. Using the past to manage the future: the role of palaeoecological and long-term data in ecological restoration. *Restoration Ecology* **28**(6): 1335–1342.
- Marchant R. 2021. *East Africa's Human Environment Interactions Historical Perspectives for a Sustainable Future*. Palgrave Macmillan: Cham; 411.
- Marchant R, Richer S, Boles O, Capitani C, Courtney-Mustaphi C, Lane P, Prendergast M, Stump D, Wynne-Jones S, Ferro Vázquez C, Wright D, Boivin N, Lang C, Kay A, Phelps L, Fuller D, Widgren M, Punwong P, Leju J, Gaillard-Lemdahl M-J, Morrison KD, Kaplan J, Benard J, Crowther A, Cuní-Sánchez A, de Cort G, Deere N, Ekblom A, Farmer J, Finch J, Gillson L, Githumbi E, Kabora T, Kariuki R, Kinyanjui R, Kyazike E, Muiruri V, Mumbi C, Muthoni R, Muzuka A, Ndiema E, Nzabandora C, Olago D, Onjala D, Pas Schrijver A, Petek N, Platts PJ, Rucina S, Shoemaker A, Thornton-Barnett S, van der Plas G, Watson L, Williamson D. 2018. Drivers and trajectories of land cover change in East Africa: human and environmental interactions from 6000 years ago to present. *Earth-Science Reviews* **178**: 322–378.
- Marlon JR. 2020. What the past can say about the present and future of fire. *Quaternary Research* **96**: 66–87.
- Marlon J, Bartlein PJ, Whitlock C. 2006. Fire-fuel-climate linkages in the northwestern USA during the Holocene. *The Holocene* **16**(8): 1059–1071.
- Martin D, Moss J. 1997. Age determination of *Acacia tortilis* (Forsk.) Hayne from northern Kenya. *African Journal of Ecology* **35**(3): 266–277.
- McCarthy MA, Gill AM, Bradstock RA. 2001. Theoretical fire-interval distributions. *International Journal of Wildland Fire* **10**(1): 73–77.
- McClanahan Y, Young TP, McClanahan SCZT. 1996. *East African ecosystems and their conservation*. Oxford University Press: Oxford.
- McLauchlan KK, Higuera PE, Miesel J, Rogers BM, Schweitzer J, Shuman JK, Tepley AJ, Varner JM, Veblen TT, Adalsteinsson SA, Balch JK. 2020. Fire as a fundamental ecological process: Research advances and frontiers. *Journal of Ecology* **108**(5): 2047–2069.
- Ming'ate FLM, Bollig M. 2016. Local rules and their enforcement in the Arabuko-Sokoke Forest Reserve co-management arrangement in Kenya. *Journal of East African Natural History* **105**(1): 1–19.
- Montade V, Schüler L, Hemp A, Bremond L, Salamanca Duarte AM, Behling H. 2018. Late Quaternary ecotone change between subalpine and montane forest zone on the leeward northern slope of Mt. Kilimanjaro. *Journal of Vegetation Science* **29**(3): 459–468.
- Moritz MA, Moody TJ, Miles LJ, Smith MM, de Valpine P. 2009. The fire frequency analysis branch of the pyrostatistics tree: sampling decisions and censoring in fire interval data. *Environmental and Ecological Statistics* **16**(2): 271–289.
- Morris JL, Brunelle A, DeRose RJ, Seppä H, Power MJ, Carter V, Bares R. 2013. Using fire regimes to delineate zones in a high-resolution lake sediment record from the western United States. *Quaternary Research* **79**(1): 24–36.
- Morrison TA, Holdo RM, Anderson TM. 2016. Elephant damage, not fire or rainfall, explains mortality of overstorey trees in Serengeti. *Journal of Ecology* **104**(2): 409–418.
- Mugo CG. 2007. *Land Use and Land Use Change Impacts Within Protected Areas and Adjacent Regions of the NE Mount Kenya*. Doctoral dissertation. Johann Wolfgang Goethe-Universität.
- Ndegwa Gichuki F. 1999. Threats and opportunities for mountain area development in Kenya. *Ambio* **28**(5): 430–435.
- Niemelä T, Pellikka P. 2004. "Zonation and characteristics of the vegetation of Mt. Kenya", in *Taita Hills and Kenya, 2004-seminar, reports and journal of a field excursion to Kenya*, (Helsinki: University of Helsinki), 14–20.

- Notter B, MacMillan L, Viviroli D, Weingartner R, Liniger HP. 2007. Impacts of environmental change on water resources in the Mt. Kenya region. *Journal of Hydrology* **343**(3-4): 266–278.
- Nyongesa KW, Vacik H. 2018. Fire Management in Mount Kenya: A case study of Gathiuru forest station. *Forests* **9**(8): 481.
- Nyongesa KW, Vacik H. 2019. Evaluating management strategies for Mount Kenya Forest Reserve and National Park to reduce fire danger and address interests of various stakeholders. *Forests* **10**(5): 426.
- Ohlson M, Tryterud E. 2000. Interpretation of the charcoal record in forest soils: forest fires and their production and deposition of macroscopic charcoal. *The Holocene* **10**(4): 519–525.
- Olago DO, Street-Perrott FA, Perrott RA, Ivanovich M, Harkness DD. 1999. Late Quaternary glacial-interglacial cycle of climatic and environmental change on Mount Kenya, Kenya. *Journal of African Earth Sciences* **29**(3): 593–618.
- Olago DD, Street-Perrott FA, Perrott RA, Odada EO. 2003. Late Holocene sedimentology and palaeoenvironment of Kiluli Swamp, Mount Kenya. *African Journal of Science and Technology* **4**(2): 12–23.
- Omoro LM, Pellikka PK, Rogers PC. 2010. Tree species diversity, richness, and similarity between exotic and indigenous forests in the cloud forests of Eastern Arc Mountains, Taita Hills, Kenya. *Journal of Forestry Research* **21**(3): 255–264.
- Omoro LMA, Laiho R, Starr M, Pellikka PK. 2011. Relationships between native tree species and soil properties in the indigenous forest fragments of the Eastern Arc Mountains of the Taita Hills, Kenya. *Forestry Studies in China* **13**(3): 198–210.
- Patrut A, Mayne DH, von Reden KF, Lowy DA, van Pelt R, McNichol AP, Roberts ML, Margineanu D. 2010. Fire history of a giant African baobab evinced by radiocarbon dating. *Radiocarbon* **52**(2): 717–726.
- Patrut A, Karl F, Mayne DH, Lowy DA, Patrut RT. 2013. AMS radiocarbon investigation of the African baobab: Searching for the oldest tree. *Nuclear Instruments and Methods in Physics Research Section B: Beam Interactions with Materials and Atoms* **294**: 622–626.
- Patrut A, Garg A, Woodborne S, Patrut RT, Rakosy L, Ratiu IA, Lowy DA. 2020. Radiocarbon dating of two old African baobabs from India. *Plos one* **15**(1): e0227352.
- Petursson JG, Vedeld P, Sassen M. 2013. An institutional analysis of deforestation processes in protected areas: The case of the transboundary Mt. Elgon, Uganda and Kenya. *Forest Policy and Economics* **26**: 22–33.
- Perrott RA. 1982. A high altitude pollen diagram from Mount Kenya: its implications for the history of glaciation. *Palaeoecology of Africa and the Surrounding Islands* **14**: 77–83.
- Pfeiffer M, Spessa A, Kaplan JO. 2013. A model for global biomass burning in preindustrial time: LPJ-LMfire (v1. 0). *Geoscientific Model Development* **6**(3): 643–685.
- Phelps LN, Chevalier M, Shanahan TM, Aleman JC, Courtney-Mustaphi C, Kiahtipes CA, Broennimann O, Marchant R, Shekine J, Quick LJ, Davis BAS, Guisan A, Manning K. 2020. Asymmetric response of forest and grassy biomes to climate variability across the African Humid Period: influenced by anthropogenic disturbance? *Ecography* **43**(8): 1118–1142.
- Phillips J. 1965. "Fire—as master and servant: its influence in the bioclimatic regions of trans-Saharan Africa", in *Proceedings: 4th Annual Tall Timbers Fire Ecology Conference 18-19 March 1965*, chairman E.V. Komarek Sr. (Tallahassee, Florida: Tall Timbers Research Station), 7–109.
- Pisarcic MF. 2002. Long-distance transport of terrestrial plant material by convection resulting from forest fires. *Journal of Paleolimnology* **28**(3): 349–354.
- Poletti C, Dioszegi G, Nyongesa KW, Vacik H, Barbujani M, Kigomo JN. 2019. Characterization of Forest Fires to Support Monitoring and Management of Mount Kenya Forest. *Mountain Research and Development* **39**(3): R1–R12.
- R Development Core Team. 2015. R: A Language and Environment for Statistical Computing. R version 3.2.0 (accessed April 2015). <http://www.r-project.org>
- Reimer PJ, Bard E, Bayliss A, Beck JW, Blackwell PG, Bronk Ramsey C, Buck CE, Edwards RL, Friedrich M, Grootes PM, Guilderson TP, Hafliadason H, Hajdas I, Hatté C, Heaton TJ, Hoffmann DL, Hogg AG, Hughen KA, Kaiser KF, Kromer B, Manning SW, Niu M, Reimer RW, Richards DA, Scott ME, Southon JR, Turney CSM, van der Plicht J. 2013. IntCal13 and Marine13 radiocarbon age calibration curves 0–50,000 yr cal BP. *Radiocarbon* **55**(4): 1869–1887.
- Rey F, Gobet E, Schwörer C, Wey O, Hafner A, Tinner W. 2019. Causes and mechanisms of synchronous succession trajectories in primeval Central European mixed Fagus sylvatica forests. *Journal of Ecology* **107**(3): 1392–1408.
- Richardson DM. 1988. Age structure and regeneration after fire in a self-sown *Pinus halepensis* forest on the Cape Peninsula, South Africa. *South African Journal of Botany* **54**(2): 140–144.
- Routledge WS, Routledge K. 1910. *With a Prehistoric People, The Akikuyu of British East Africa. Being an Account of the Method and Life and Mode of Thought Found Existent Amongst a Nation on Its First Contact with European Civilisation*. Edward Arnold: London.
- Rucina SM, Muiruri VM, Kinyanjui RN, McGuinness K, Marchant R. 2009. Late Quaternary vegetation and fire dynamics on Mount Kenya. *Palaeogeography, Palaeoclimatology, Palaeoecology* **283**(1-2): 1–14.
- Rull V. 2010. Ecology and palaeoecology: two approaches, one objective. *The Open Ecology Journal* **3**: 1.
- Rull V. 2014. Time continuum and true long-term ecology: from theory to practice. *Frontiers in Ecology and Evolution* **2**: 75.
- Sánchez Goñi MF, Desprat S, Daniau A-L, Bassinot FC, Polanco-Martínez JM, Harrison SP, Allen JRM, Anderson RS, Behling H, Bonnefille R, Burjachs F, Carrión JS, Cheddadi R, Clark JS, Combourieu-Nebout N, Courtney-Mustaphi CJ, Debussk GH, Dupont LM, Finch JM, Fletcher WJ, Giardini M, González C, Gosling WD, Grigg LD, Grimm EC, Hayashi R, Helmens K, Heusser LE, Hill T, Hope G, Huntley B, Igarashi Y, Irino T, Jacobs B, Jiménez-Moreno G, Kawai S, Kershaw P, Kumon F, Lawson IT, Ledru M-P, Lézine A-M, Liew PM, Magri D, Marchant R, Margari V, Mayle FE, McKenzie M, Moss P, Müller S, Müller UC, Naughton F, Newnham RM, Oba T, Pérez-Obiol R, Pini R, Ravazzi C, Roucoux KH, Rucina SM, Scott L, Takahara H, Tzedakis PC, Urrego DH, van Geel B, Valencia BG, Vandergoes MJ, Vincens A, Whitlock CL, Willard DA, Yamamoto M. 2017. The ACER pollen and charcoal database: a global resource to document vegetation and fire response to abrupt climate changes during the last glacial period. *Earth System Science Data* **9**: 679–695.
- Sang, JK. 2001. Case study 3 Kenya The Ogiek in Mau Forest, *From principles to practice - Indigenous peoples and protected areas in Africa*. Forest Peoples Programme: Moreton-in-Marsh, UK; 111–138.
- Schüler L. 2012. Studies on late Quaternary environmental dynamics (vegetation, biodiversity, climate, soils, fire and human impact) on Mt Kilimanjaro. PhD Thesis. Georg-August-Universität Göttingen, Germany.
- Schüler L, Hemp A. 2016. Atlas of pollen and spores and their parent taxa of Mt Kilimanjaro and tropical East Africa. *Quaternary International* **425**: 301–386.
- Seddon AW, Mackay AW, Baker AG, Birks HJB, Breman E, Buck CE, Ellis EC, Froyd CA, Gill JL, Gillson L, Johnson EA. 2014. Looking forward through the past: identification of 50 priority research questions in palaeoecology. *Journal of Ecology* **102**(1): 256–267.
- Sharam G, Sinclair ARE, Turkington R. 2006. Establishment of Broad-leaved Thickets in Serengeti, Tanzania: The Influence of Fire, Browsers, Grass Competition, and Elephants. *Biotropica* **38**(5): 599–605.
- Sharew H, Grace J, Legg CJ. 1996. Response of two Afromontane coniferous tree species to light and nutrient supply. *Tree Physiology* **16**(7): 617–626.
- Sinclair A. 2012. *Serengeti story: Life and science in the world's greatest wildlife region*. Oxford University Press: Oxford, UK.
- Spinage CA. 2012. *African Ecology - Benchmarks and Historical Perspectives*. Springer-Verlag: Berlin.
- Ssemmanda I, Gelorini V, Verschuren D. 2014. Sensitivity of East African savannah vegetation to historical moisture-balance variation. *Climate of the Past* **10**: 2067–2080.
- Stuiver M, Polach HA. 1977. Discussion reporting of ¹⁴C data. *Radiocarbon* **19**(3): 355–363.
- Swart ER. 1963. Age of the baobab tree. *Nature* **198**(4881): 708–709.
- Thijs KW, Brys R, Verboven HA, Hermy M. 2012. The influence of an invasive plant species on the pollination success and reproductive

- output of three riparian plant species. *Biological Invasions* **14**(2): 355–365.
- Thijs KW, Aerts R, Van de Moortele P, Musila W, Gulinck H, Muys B. 2014. Contrasting cloud forest restoration potential between plantations of different exotic tree species. *Restoration Ecology* **22**(4): 472–479.
- Tinner W, Hofstetter S, Zeugin F, Conedera M, Wohlgemuth T, Zimmermann L, Zweifel R. 2006. Long-distance transport of macroscopic charcoal by an intensive crown fire in the Swiss Alps-implications for fire history reconstruction. *The Holocene* **16**(2): 287–292.
- Troels-Smith J. 1955. Karakterisering af løse jordarter [Characterization of unconsolidated sediments]. *Danmarks Geologiske Undersøgelse Series IV* **3**(10): 1–73.
- Trouet V, Coppin P, Beeckman H. 2006. Annual ring patterns in *Brachystegia* trees of miombo woodland reveal climatic influence. *Biotropica* **38**: 375–382.
- Troup RS. 1932. *Exotic Forest Trees in the British Commonwealth*. Nature Publishing: Oxford.
- Umer M, Lamb HF, Bonnefille R, Lezine AM, Tiercelin JJ, Gibert E *et al.* 2007. Late Pleistocene and Holocene vegetation history of the Bale Mountains, Ethiopia. *Quaternary Science Reviews* **26**: 2229–2246.
- UNEP. 2012. Linkages between Kenya's forest regulating services and the rest of the economy. Prime Africa Consultants report to UNEP 7 February 2012. <https://wedocs.unep.org/rest/bitstreams/14207/retrieve>
- Vachula RS. 2021. A meta-analytical approach to understanding the charcoal source area problem. *Palaeogeography, Palaeoclimatology, Palaeoecology* **562**: 110111.
- Vachula RS, Russell JM, Huang Y, Richter N. 2018. Assessing the spatial fidelity of sedimentary charcoal size fractions as fire history proxies with a high-resolution sediment record and historical data. *Palaeogeography, Palaeoclimatology, Palaeoecology* **508**: 166–175.
- Vacik H, Nyongesa KW, Birech R, Kigomo JN, Poletti C, Gergo D. 2018. White paper on Integrated Fire Management in Mt. Kenya forest. *Egerton University Firemaps Project*: 1–7. https://typo3.oead.at/fileadmin/Dokumente/kef-research.at/04_projekte/01_laufende_projekte/p211_fire_maps/Appendix_FIREMAPS.pdf
- Van Wagner CE. 1978. Age-class distribution and the forest fire cycle. *Canadian Journal of Forest Research* **8**(2): 220–227.
- Van Zinderen Bakker E, Coetzee JA. 1988. A review of Late Quaternary pollen studies in East, Central and Southern Africa. *Review of Palaeobotany and Palynology* **55**(1-3): 155–174.
- Veblen TT. 2003. Historic range of variability of mountain forest ecosystems: concepts and applications. *The Forestry Chronicle* **79**(2): 223–226.
- Verlinden A, Laamanen R. 2006. Long term fire scar monitoring with remote sensing in northern Namibia: relations between fire frequency, rainfall, land cover, fire management and trees. *Environmental Monitoring and Assessment* **112**(1): 231–253.
- Wekesa C, Kirui BK, Maranga EK, Muturi GM. 2019. The fate of Taita Hills forest fragments: Evaluation of forest cover change between 1973 and 2016 using Landsat imagery. *Open Journal of Forestry* **10**: 22–38.
- Wesche K. 2003. The importance of occasional droughts for afroalpine landscape ecology. *Journal of Tropical Ecology* **19**(2): 197–207.
- Wesche K, Miehe G, Kaeppli M. 2000. The significance of fire for afroalpine ericaceous vegetation. *Mountain Research and Development* **20**(4): 340–347.
- Whitlock C, Larsen C. 2001. Charcoal as a fire proxy. In *Tracking environmental change using lake sediments*, Smol JPS *et al.* ed. **1**. Springer: Dordrecht; 75–97.
- Whitlock C, Millspaugh SH. 1996. Testing the assumptions of fire-history studies: an examination of modern charcoal accumulation in Yellowstone National Park, USA. *The Holocene* **6**(1): 7–15.
- Whitlock C, Bradbury JP, Millspaugh SH. 1997. Controls on charcoal distribution in lake sediments: case studies from Yellowstone National Park and Northwestern Minnesota. In *Sediment records of biomass burning and global change*, Clark JS, Cachier H, Goldammer JG, Stocks B eds. Springer: Heidelberg; 367–386.
- White PS. 1979. Pattern, process, and natural disturbance in vegetation. *The Botanical Review* **45**(3): 229–299.
- Wiesmann U, Gichuki FN, Kiteme BP, Liniger H. 2000. Mitigating conflicts over scarce water resources in the highland-lowland system of Mount Kenya. *Mountain Research and Development* **20**(1): 10–15.
- Wimbush SE. 1937. Natural Succession in the Pencil Cedar Forest of Kenya Colony. *Empire Forestry Journal* **16**(1): 49–53.
- Wood PJ. 1965a. A note on forestry on Kilimanjaro. *Tanganyika Notes and Records* **64**: 111–114.
- Wood PJ. 1965b. The forest glades of west Kilimanjaro. *Tanganyika Notes and Records* **64**: 108–111.
- Woodward C, Haines HA. 2020. Unprecedented long-distance transport of macroscopic charcoal from a large, intense forest fire in eastern Australia: Implications for fire history reconstruction. *The Holocene* **30**(7): 947–952.
- Wooller MJ, Swain DL, Ficken KJ, Agnew ADQ, Street-Perrott FA, Eglinton G. 2003. Late Quaternary vegetation changes around Lake Rutundu, Mount Kenya, East Africa: evidence from grass cuticles, pollen and stable carbon isotopes. *Journal of Quaternary Science* **18**(1): 3–15.
- Wyant JG, Reid RS. 1992. Determining the age of *Acacia tortilis* with ring counts for South Turkana, Kenya: a preliminary assessment. *African Journal of Ecology* **30**(2): 176–180.
- Young NE, Romme WH, Evangelista PH, Mengistu T, Worede A. 2017. Variation in population structure and dynamics of montane forest tree species in Ethiopia guide priorities for conservation and research. *Biotropica* **49**(3): 309–317.
- Zhou Y, Chen S, Hu G, Mwachala G, Yan X, Wang Q. 2018. Species richness and phylogenetic diversity of seed plants across vegetation zones of Mount Kenya, East Africa. *Ecology and Evolution* **8**(17): 8930–8939.